

ELDS presents

An amateur production by arrangement with R&H Theatricals Europe

Rodgers & Hammerstein's

# The King and I

Music by RICHARD RODGERS

Book and Lyrics by

OSCAR HAMMERSTEIN II

Based on "Anna and the King of Siam" by Margaret Landon

Original Choreography by Jerome Robbins

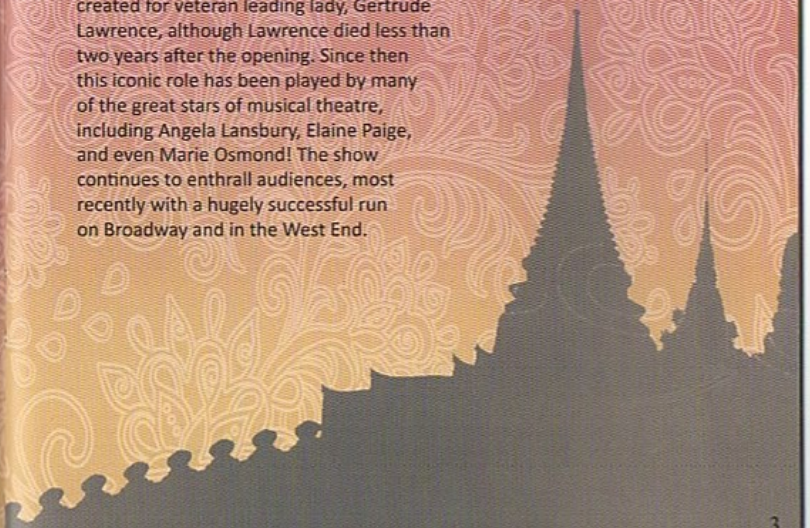
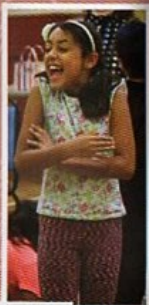


## The King and I

This highly celebrated musical set in 1860's Bangkok tells the moving story of Anna, a British school teacher hired as a governess for the Royal children as part of the King of Siam's idea to modernise the country. Anna is initially dismayed by many of the traditions the King holds dear, and Anna and the King struggle to find common ground. The King is considered a barbarian by Western rulers, and he eventually agrees to ask Anna's advice, asking her to help change his image – if not his actual practice. Anna and the King teach each other about understanding, respect, and love that can transcend the greatest of differences.

*The King and I* is the fifth musical by the team of composer Richard Rodgers and dramatist Oscar Hammerstein II. It is based on Margaret Landon's novel, *Anna and the King of Siam* (1944), which is in turn derived from the memoirs of Anna Leonowens, governess to the children of King Mongkut of Siam. The King and I premiered on March 29, 1951, at Broadway's St. James Theatre, running for nearly three years.

For many people the story will always be associated with the film adaption of 1956, starring Deborah Kerr and Yul Brynner. The role of Anna was originally created for veteran leading lady, Gertrude Lawrence, although Lawrence died less than two years after the opening. Since then this iconic role has been played by many of the great stars of musical theatre, including Angela Lansbury, Elaine Paige, and even Marie Osmond! The show continues to enthral audiences, most recently with a hugely successful run on Broadway and in the West End.





# Platform One

NURSERY LIMITED

Children's Day Care Nursery  
3 months to 5 years

"Your child's first platform  
for a better future"

8 00am to 6 00pm  
Monday to Friday

Spaces  
Available

Grange Park Station,  
Vera Avenue,  
Grange Park, London N21 1RE  
Tel: 020 8360 6002

(Entrance to the Nursery is at the rear of the building)



## mowbraycarpets

Transform your home with quality flooring  
from leading manufacturers



We are registered specialists for The Carpet  
Foundation and are each operated under a code of  
conduct approved by the Trading Standards.

### WHY CHOOSE US?

- Over 3000 carpets to choose from
- Guaranteed lowest prices on a like for like comparison
  - Carpet Foundation Trading Standards Approved Code of Conduct
  - Customer Services - Avoid the frustrations of dealing with large companies
  - In house fitting teams - No subcontractors with speed their only concern.



mowbray carpets was founded over 30 years ago and operates from shops in Edgware Middlesex and Cockfosters EN4. We specialise and fit carpets and floors from all the leading british manufacturers including :- \*Brintons \*Cavalier \*Ryalux \*Ulster \*Victoria \*Westex \*Woodward Grosvenor \*Kamdean  
We also import carpets from around the world

108 Cockfosters Road, Cockfosters, EN4 0DP 020 3441 2939  
mowbrayc@gmail.com | www.mowbraycarpets.co.uk

## Enfield Light Operatic & Dramatic Society

### COMMITTEE

Chairman  
Secretary  
Treasurer  
Membership  
Production Manager  
Publicity  
General

Mark Shaw  
Victoria Santamaria Cannaford  
Frank Bundle  
Angela Crick  
Fiona Corden  
Sarah Henderson  
Lesley Clay, Emily Kennedy-Neal, Helen Wikeley

### Message from the Chair

A very warm welcome to you all. Every year, NODA London holds a festival weekend which includes an awards ceremony, and I am proud to let you know that ELODS was the recipient of a number of awards this year, including Best in District for Scenery for *Parade*. Sarah Henderson won a comedy award for her performance in *The Drowsy Chaperone*, and *Parade* won Best Musical in District 7. In addition, our long-serving Stage Manager and Treasurer, Frank Bundle, received a lifetime achievement award. Well done to everyone. After many years our programme creator is taking a well-earned break, if anyone is interested in taking on this role for future shows, please contact me on 07711 316 474.

So onto our show, *The King and I* - a classic, but never performed by ELODS before. We welcome David Macklin, who has joined us to play the King, together with 17 children. The wonderfully talented ELODS regular Naomi Delamore plays Anna.

Looking forward to 2019, we have two fabulous shows for you. In April, we bring you Leonard Bernstein's *On The Town* in celebration of his 100th Birthday year, and in the autumn we are delighted to present *Chitty Chitty Bang Bang*.

Thank you, as always, for supporting our shows.

Mark





## *Musical Numbers*

Overture

**I Whistle a Happy Tune**  
*Anna and Louis*

**My Lord and Master**  
*Tuptim*

**Hello, Young Lovers**  
*Anna*

**March of the Royal Siamese Children**  
*Orchestra*

**A Puzzlement**  
*The King*

**The Royal Bangkok Academy**  
*Anna, Wives, Children*

**Getting to Know You**  
*Anna, Wives, Children*

**We Kiss in a Shadow**  
*Tuptim, Lun Tha*

**A Puzzlement (reprise)**  
*Louis and Prince Chulalongkorn*

**Shall I Tell You What I Think of You?**  
*Anna*

**Something Wonderful**  
*Lady Thiang*

**Buddhist Prayer/Act I finale**  
*King and Company*

## *Musical Numbers*

Entr'acte

**Western People Funny**  
*Lady Thiang, Wives*

**I Have Dreamed**  
*Tuptim, Lun Tha*

**Hello, Young Lovers (reprise)**  
*Anna*

**"The Small House of Uncle Thomas" (Ballet)**  
*Tuptim, Wives*

**Song of the King**  
*The King, Anna*

**Shall We Dance?**  
*Anna, The King*

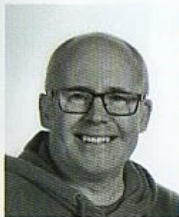
**"I Whistle a Happy Tune" (reprise)**  
*Anna*

**Something Wonderful (reprise, finale ultimo)**  
*Orchestra*

Please note that the taking of photos or videos is prohibited, and please switch off mobile phones during the performance. Our ushers will be forced to ask any persons not complying with this request to leave the auditorium.



## Production Team



### Rich Stoughton - Director

Rich trained at Corona Stage School and with Bodens. This is Rich's 13th show with ELODS and he has loved directing *The King & I* with this amazing company. This show has been a joy to work on from start to finish with a wonderful production team and the dedication and expertise of Mark Newport as MD and Emma Bell as Choreographer. As a performer Rich has played many notable roles both professionally and on the amateur stage including Bill Snibson (*Me & My Girl*), Eugene (*Brighton Beach Memoirs*), Curly (*Oklahoma!*), Danny (*Grease*), Peter and Simon (*Jesus Christ Superstar*) and starred in *The Wizard Of Oz* with the RSC at The Barbican.



### Mark Newport - Musical Director

Mark has now been working with ELODS for 30 years. Alongside this and teaching commitments he has had a successful career in London's West End, working for many years on *Les Miserables*, for which he has conducted performances in both London's West End and on the UK tour. Other West End credits on keyboards include *Bombay Dreams*, *Cats*, *Chicago*, *Martin Guerre*, *Phantom of the Opera*, *Starlight Express*, *Sunset Boulevard*, *The Goodbye Girl*, and *Woman in White*. As Musical Director he has performed at Sadler's Wells, The Mermaid (Royal Gala), Whitehall and Bloomsbury theatres. He was also Assistant Conductor for Opera East on six national tours. Mark has taught at Guildford School of Acting, Mountview and Guildhall and is a member of the Music Staff at Queenswood School, Hertfordshire. *The King and I* is Mark's 65th show with ELODS!



### Emma Bell - Choreographer

Emma has been performing for over 25 years and has choreographed a number of productions for local groups. Having previously danced in *42nd Street* and *Crazy for You* with ELODS, she was delighted to be asked to join the Production team for *The King and I*. She'd like to thank the cast for their endless patience as rehearsing while heavily pregnant proved trickier than she expected!



### Frank Bundle - Stage Manager

Frank has been involved in amateur theatre for over 35 years. He became involved with ELODS when asked to crew for *Sweet Charity* in 1982. He has subsequently stage managed every major production bar one, and has been involved in the design and construction of the sets for several of our more recent shows. In 2011 he was presented with the prestigious NODA Flame Award for services to Amateur Theatre. *The King and I* is Frank's 69th production with ELODS.

## Production Team



### Fiona Corden - Production Manager

This is Fiona's 7th show as Production Manager and she is now fully versed in the licensing of children and animals, the dimensions of the Wyllyotts' wings and the best times to ask the treasurer for more budget. She sends a huge thank you to everyone involved with the production of *The King and I*.



### Greta Jenkins - Production Secretary

Greta's professional theatrical experience includes working as Agent, Producer and Vice Principal of a central London drama school, and as a tutor has included TV, films and the RSC. She now produces plays and shows locally. In ELODS Greta has also played many roles over the years, but unfortunately seems to have specialised in rather bonkers trollops. No comments please.



### Hilary Thorne - Costumes

After 25 years you would think costuming a show would be easy, but every one brings its own challenges and difficulties, which is why I enjoy it so much! Many thanks to Lesley, Sarah, Eleanor and Julia for their help.



### Lesley Clay - Props

After a night discussing what we would like to do if we were starting over, I let it be known that I would love to do props or costumes for the film/TV industry. This led the Chairman of ELODS to ask if I would be interested in helping with *Fiddler on the Roof*. I promised I would be available for show week and thought to myself, what have I got to lose? Well the rest is history, I loved it and this will be my 7th show. I love sourcing the props and show week with the excitement of each performance. Thank you ELODS for making me so welcome.



### Michelle Shaw - Front of House

NODA award-winning Front of House Manager Michelle has been meeting and greeting our patrons for many years. She is always looking for new volunteers to help with ushering and selling programmes, raffle tickets and ice creams. If you are interested in helping at future shows, please contact her on 07710 494 010.



Southgate Opera  
www.southgateopera.co.uk

# LA TRAVIATA

By GIUSEPPE VERDI

February  
21<sup>st</sup> to 23<sup>rd</sup>  
2019  
At 7.30pm

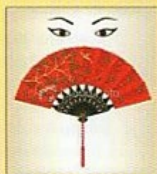
Wyllyotts Theatre  
Potters Bar

www.tickets.wyllyottstheatre.co.uk

BOX OFFICE: 01707 645005

Southgate Opera

# THE MIKADO



Come and Sing (or just enjoy watching) *The Mikado*  
with Southgate Opera on

Saturday, 23 February 2019 at 2.30pm  
Wyllyotts Theatre, Potters Bar

A costumed, semi-staged production of the Gilbert & Sullivan operetta.  
Song sheets provided for those who wish to join in the choruses.

Tickets £12 (£8 for under 18s)  
Available from Wyllyotts Theatre 01707 645005  
www.tickets.wyllyottstheatre.co.uk  
or Southgate Opera 020 8360 0788

## Production Team

Director - Rich Stoughton  
Musical Director - Mark Newport  
Choreographer - Emma Bell  
Production Manager - Fiona Corden  
Production Secretary - Greta Jenkins  
Stage Manager - Frank Bundle  
Lighting Design and Operation - Robert Hearn  
Sound Design and Operation - Tom Culley  
Set Courtesy of Paul Lazell  
Wardrobe - Hilary Thorne

Costumes Courtesy of Thespis Theatrical Costumers Ltd, Diss, Norfolk  
Photos - Georgina Barrell at Captivate Photography, Corinne Roberts  
Properties - Lesley Clay, John Stivey  
Poster / Flyer Design - Sunny Carter  
Front of House - Michelle Shaw  
Programme - Corinne Roberts, Sunny Carter

## Band

Flute - Jennie Small  
Clarinet 1 - Claire Frost  
Clarinet 2 - Mark Hayes  
Trumpet - Sam Lewis  
Horn - Eddie Morgan  
Trombone - Matt Quick  
Violin 1 - Lucia D'Avanzo-Lewis  
Violin 2 - Inga Franks  
Viola - Sebastian Lee  
Bass - Alan Coughlan  
Drum Kit - Adam Coughburn  
Percussion - Kieran Newport  
MD/Piano - Mark Newport

## For Wyllyotts Theatre

General Manager - Ginny Williams  
Operations Manager - Chris Edwards  
Technical Manager - Peter Windsor  
Marketing Manager - Debbie Wiltshire

OFFBOS

BASED ON THE WORKS OF DR. SEUSS

# SEUSSICAL THE MUSICAL



MONDAY 26<sup>TH</sup> NOV - SUNDAY 2<sup>ND</sup> DEC 2018  
DUGDALE CENTRE, ENFIELD, EN2 6DS  
WWW.DUGDALECENTRE.CO.UK // 020 8807 6680\*

MUSIC BY STEPHEN FLAHERTY  
BOOK BY LYNN ANRENS & STEPHEN FLAHERTY  
LYRICS BY LYNN ANRENS

\*THIS MUSICAL PRODUCTION IS PRESENTED BY ARRANGEMENT WITH MCA MUSIC THEATRE INTERNATIONAL. ALL RIGHTS RESERVED. PERFORMANCE MATERIALS ARE ALSO AVAILABLE AT MCA MUSIC THEATRE INTERNATIONAL.



**LONDON'S CRYING OUT FOR  
A NEW CHILDREN'S HOSPICE**

Text **NACH10 £10 to 70070**  
to donate £10

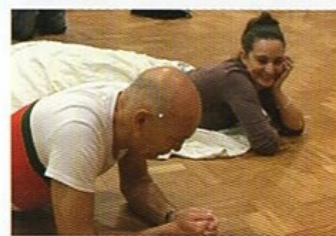
Help us build The Ark



For more information and to donate online go to [neah.do/londoncrying](http://neah.do/londoncrying)

Registered Charity No. 1081108 - Registered with the Fundraising Reg. Body







## Cast



### Naomi Delamore - Anna Leonowens

Naomi has really loved figuring out the complexities of the very forward thinking and gutsy Anna. She has been involved with ELODS for many years and has been lucky enough to play roles such as Dorothy in *The Wizard of Oz*, Miss Dorothy in *Thoroughly Modern Millie* and Babe in *The Pajama game*. This role is the hatrix in Naomi's Rodgers and Hammerstein appearances, following her lead roles in *Oklahoma!* and most recently in *South Pacific*. She has loved rehearsing with her ELODS family and loved "getting to know" the children in this production. She is terrified of falling over her huge skirts and hopes you will forgive her if she does.



### David Macklin - The King

This is David's first show with ELODS, but he has been involved in amateur theatre for 50 years. During that time he has been totally absorbed either as a performer or latterly as a director. David has performed with companies in Essex, Hertfordshire and North London and is delighted to be able to add this company to the list!

David's last four appearances on this stage were as Uncle Max in *The Sound of Music*, Daddy Warbucks in *Annie* and Monsignor O'Hara in *Sister Act* with Potters Bar Theatre Company and Oliver Barrett in Green Room's Production of *Love Story*.



### Sarah Henderson - Lady Thiang

This is Sarah's sixth show with ELODS and her most difficult, yet interesting role to date! Subtlety and restraint of strong emotions after the bold and extravagant Drowsy Chaperone. But this is the joy of ELODS in their variety of shows. Thank you for the challenge!

## Cast



### Jude Stoughton - Tuptim

Having played exuberant Diva, Janet Van de Graaff in ELODS last production of *The Drowsy Chaperone*, Jude is playing a very different character as the innocent Tuptim. Favourite roles include Julie Jordan, Diana Morales, Eliza Doolittle, Julia Sullivan (*The Wedding Singer*), Jane (*Disco Inferno*). Roles with ELODS include Mary Magdalene (*Jesus Christ Superstar*), Peggy Sawyer (*42nd St*), Ado Annie (*Oklahoma!*), Maggie (*Lend Me a Tenor*), Tzeitl (*Fiddler on the Roof*), Serena (*Legally Blonde*) and Polly Baker (*Crazy for You*).



### Steven Berman - Lun Tha

It has been an exciting year for Steve; after performing as Robert in *The Drowsy Chaperone*, he is delighted to be playing Lun Tha in *The King and I*. Steve has enjoyed many previous performances with ELODS, as Mr Bratt (*How to Succeed...*) Kyle (*Legally Blonde*) and Sky (*Guys and Dolls*). Steve is also pleased to announce that he passed his Level 2 Mathematics and literature earlier this year, now he feels like he can do anything - even steal a Princess away from a King! Sssshhhh!



### Richard Hutchinson - The Kralahome

This is Richard's sixth show with ELODS. He is back on familiar ground with the *King and I* playing yet another villain, the Kralahome.

He really enjoys performing with ELODS, and it is a very different experience to his day job as a nurse in the NHS. He wishes all the cast and crew a great show week, and hopes you enjoy the show.



### Mark Tobin - Sir Edward Ramsay

This is Mark's 5th show with ELODS, though this is the first time he is playing an actual British person (which means there is less excuse for him to get the accent wrong!). He very much loves being part of the ELODS family and hopes everyone who has come to see us enjoys the show.



*Ensemble*



Lucy Breese



Stef Carpenter



Debbie Connor



Les Gershman  
Guard



Jemma Hickman



Emily Kennedy Neal



Gregor Lusty  
Captain Orton



Bethany Newport



Jada O'Geare



Mel Ryde



Mark Shaw  
Phra Alack



Clare Viccars



David Watts  
The Interpreter



Helen Wikeley

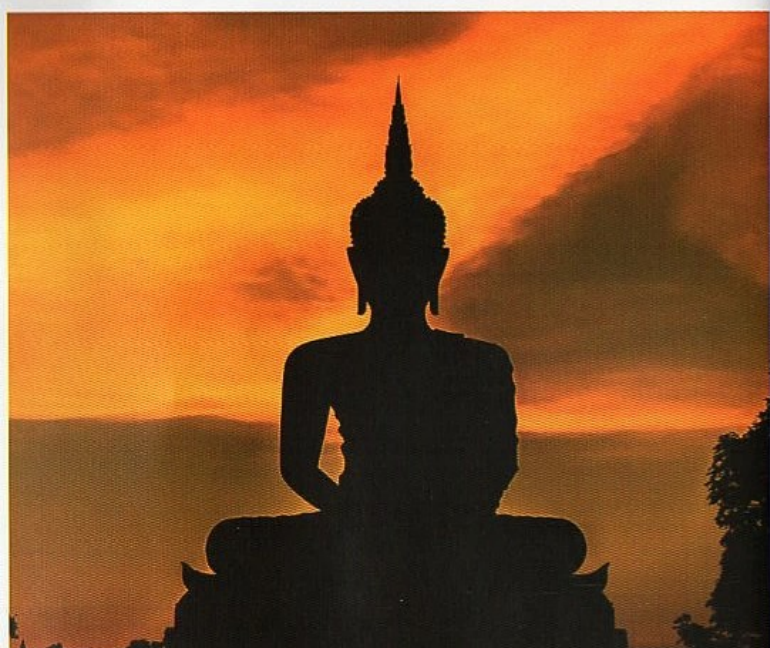


Mar Copues Out  
Vocals



Louise Newport  
Vocals





Break a leg, et cetera, et  
cetera, et cetera, to all  
involved with **the King & I!**  
From everyone at the

**THE BARNET  
LOCAL EN4**

THE LOCAL MAGAZINE FOR LOCAL PEOPLE

## *ELODS would like to thank...*

Thank you to all our chaperones and helpers; Leanne Lynch, Linda Folan, Mar Copues Out, Fidel Hassan, Hilary Thorne, Becky Beach, Maria Freegard, Julia Breese, Gregor Lusty, and especially Sue Pritchard for all her patience and organisational skills.

Special thanks to Thespi Theatrical Costumers, Norfolk for the loan of costumes, and to Paul Lazelle for the loan of the set.

Many thanks to David Dowse and Lesley Clay for ingenious and resourceful prop making, Simon Dingomel for helping with props, Georgina Barrell for photography, Fiona Corden, Sarah Henderson, and Mark Shaw for jobs too numerous to mention, Michelle Shaw for organising Front of House.

ELODS is especially grateful to Frank Bundle and helpers for building our lovely new Props shed.

We would also like to thank the members of the orchestra, all the technical team and the backstage crew, the first-aiders at the Wyllyotts Theatre, the front of house volunteers, all our advertisers, "Friends" of ELODS, and all the "unsung heroes" without whom the show would never happen, and our ever-patient families.



ELODS PRESENT  
Music and Lyrics by Richard M. Sherman and Robert B. Sherman  
Music by Special Arrangements with Sony/ATV Publishing  
Adapted for the stage by Jeremy Green  
Based on the MGM Music Picture  
Licensed Direct Adapted by Roy Peterson

**IAN FLEMING'S  
CHITTY CHITTY  
BANG BANG**

**22 -26 October 2019**  
The Wyllyotts Theatre, Potters Bar, EN6 2HN

**Box Office 01707 645005**  
[www.wyllyottstheatre.co.uk](http://www.wyllyottstheatre.co.uk)



## ELODS Past Productions

1953	Trial by Jury	1988	Godspell,
1954	HMS Pinafore		Goldilocks and the Three Bears
1955	The Gondoliers	1989	The Pirates of Penzance, Chicago
1956	Iolanthe & Patience	1990	The Pajama Game,
1957	The Mikado		Little Mary Sunshine
1958	Yeoman of the Guard	1991	The Good Companions, Princess Ida
1959	Trial By Jury	1992	Half a Sixpence, Guys and Dolls
1960	The Pirates of Penzance	1993	Kiss Me Kate, The Wizard of Oz
1961	The Gondoliers, The Gypsy Baron	1994	Fiddler on the Roof, The Mikado
1962	Iolanthe	1995	42nd Street, Anything Goes
1963	HMS Pinafore	1996	Billy, Annie
1964	Brigadoon	1997	Sweet Charity, High Society
1965	The Mikado	1998	My Fair Lady, Godspell
1966	La Belle Helene, Trial By Jury	1999	Crazy for You, Me and My Girl
1967	Ruddigore	2000	How to Succeed in Business Without Really Trying, Oklahoma!
1968	Lilac Time, Music Hall		
1969	Yeoman of the Guard	2001	Hello, Dolly,
1970	Merrie England, Me and My Girl		The Best Little Whorehouse in Texas
1971	Orpheus in the Underworld,	2002	Sugar, Fiddler on the Roof
	G&S Concert, Music Hall	2003	The Boardwalk Gondoliers,
1972	Brigadoon, The Boyfriend,		South Pacific
	G&S Concert	2004	Cabaret, Calamity Jane
1973	Oklahoma!, The Mikado	2005	The Pirates of Penzance
1974	The Pajama Game, Salad Days	2006	High Society, Carousel
1975	Fiddler on the Roof, How to Succeed in Business Without Really Trying	2007	Oliver!, Hot Mikado
		2008	Annie, Singin' in the Rain
1976	Iolanthe, Music Hall	2009	The Wizard of Oz, Iolanthe
1977	Flappers and Flannels,	2010	The Pajama Game, Kiss Me Kate
	Maid of the Mountain	2011	Thoroughly Modern Millie,
1978	Oh! What a Lovely War,		Jesus Christ Superstar
	Orpheus in the Underworld	2012	42nd Street, Oklahoma!
1979	Free and Air, The Arcadians	2013	How to Succeed in Business Without Really Trying, Whistle Down the Wind
1980	Music Hall, Cabaret		
1981	Carousel, Call Me Madam	2014	Acorn Antiques: The Musical,
1982	Sweet Charity, The Card		Lend Me a Tenor
1983	Memories, The Gondoliers	2015	South Pacific, Fiddler on the Roof
1984	States Alive, Fiddler on the Roof	2016	Legally Blonde, Guys and Dolls
1985	The Sorcerer, Oklahoma!	2017	Crazy for You, Parade
1986	The Mikado, Oh! What a Lovely War	2018	The Drowsy Chaperone
1987	Finian's Rainbow, Cabaret		

Fiddler on the Roof (2015)



The Drowsy Chaperone (2018)



South Pacific (2015)



Crazy for You (2017)



Guys and Dolls (2016)



Parade (2017)



Legally Blonde (2016)



ELODS presents

This amateur production is presented by permission with  
Boosey & Hawkes Music Publishers Limited



# ON THE TOWN



Music by Leonard Bernstein

Book & Lyrics by Betty Comden

and Adolph Green

Based on a Concept by Jerome Robbins

**30 April - 4th May 2019**

**The Wyllotts Theatre**

**Box Office: 01707 645005**

[www.wyllottstheatre.co.uk](http://www.wyllottstheatre.co.uk)