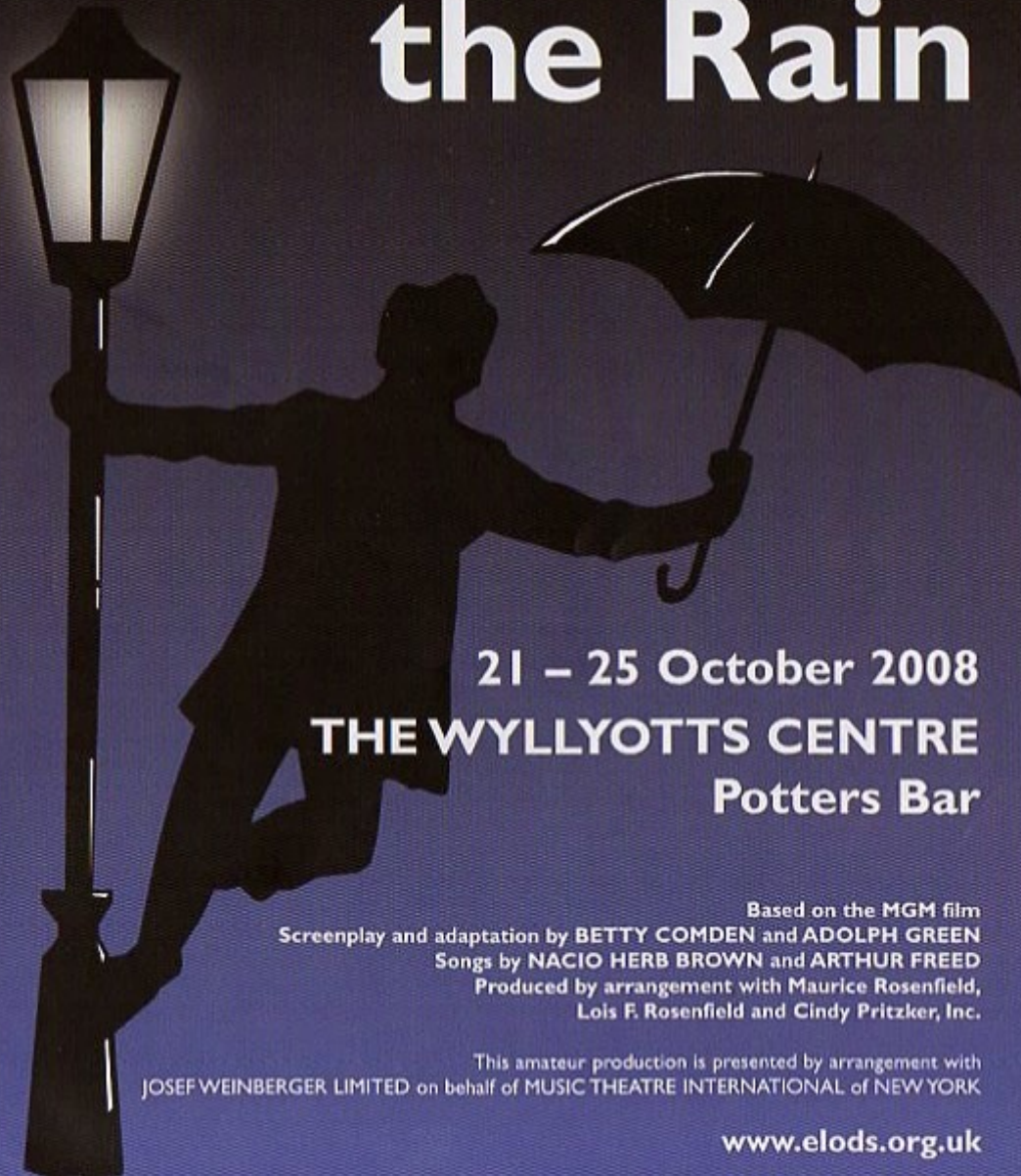


ELODS presents

Singin' in the Rain



21 – 25 October 2008

THE WYLLYOTTS CENTRE
Potters Bar

Based on the MGM film
Screenplay and adaptation by **BETTY COMDEN** and **ADOLPH GREEN**
Songs by **NACIO HERB BROWN** and **ARTHUR FREED**
Produced by arrangement with Maurice Rosenfield,
Lois F. Rosenfield and Cindy Pritzker, Inc.

This amateur production is presented by arrangement with
JOSEF WEINBERGER LIMITED on behalf of **MUSIC THEATRE INTERNATIONAL** of **NEW YORK**

www.elods.org.uk



IS DELIGHTED TO BE SUPPORTING

ENFIELD LIGHT OPERATIC & DRAMATIC SOCIETY'S
PRODUCTION OF

SINGIN' IN THE RAIN

Data Connection is one of the world's leading telephony and communications technology suppliers, delivering innovative solutions for traditional and next generation networks.

'Partners in the Community'

visit us @ www.dataconnection.com



DATA CONNECTION
100 Church Street
Enfield EN2 6BQ



MILFIELD THEATRE
Silver Street, Edmonton, London, N18 1PJ

Finchley & Friern Barnet Operatic Society
presents

A MUSICAL COMEDY BY JOHN DEMPSEY AND DANA P ROWE

THE WITCHES OF EASTWICK

Tues 4th – Sat 8th November 2008

Evenings at 7:45 pm Sat Matinee at 3:00 pm

Tickets: 020 8482 6923

tickets@ffbos.com



This amateur production is presented by arrangement with Joseph Weinberger Ltd on behalf of Music Theatre International and Cameron Mackintosh Ltd

Bang On The Door Ltd
wish ELODS
great success in
their production of
Singin' in the Rain



I love
the
rain



© bang on the door ©

Enfield Light Operatic and Dramatic Society

Hon. Vice-Presidents

Mike Gilbert, Sally Pearson

Committee Officers

Chair

Natalie O'Sullivan

Secretary

Roger Eames

Treasurer

Frank Bundle

Publicity

Sandra Ashworth

Sunny Carter

Membership

Stella Kitanos

Social

Bob Jones

Website

Phil Crocker

General

Mark Shaw

Eleanor Glazer

Would you like to become a 'Friend' of ELODS? You will receive many benefits including regular updates of society news and advance notification of our productions.

Would you like to hear about forthcoming shows by being on our mailing lists?

For further details in relation to any of the above please visit our website or email Natalie O'Sullivan at natalie@theluxor.co.uk

www.elods.org.uk

email: postmaster@elods.org.uk



Message from the Madam (Madam Chair that is!)

Warm autumnal greetings friends and visitors to our 2008 production of *Singin' in the Rain*.

After our highly successful and enjoyable production of *Annie* we swiftly started rehearsing and auditioning for our next production, barely skipping a beat. We could not have chosen a more appropriate show to start this season of English weather as rehearsals got underway in torrential conditions. I, however, managed to avoid the worst of it whilst sunning myself on a beach in the Maldives on honeymoon! No longer the meek and mild Miss Butler, now I am the all-powerful "not-so-fishy-wife", Mrs O for short!

Our biggest and most significant hurdle was, MEN! But then isn't it always? As wonderful as all the men in our society are, there just aren't enough of them! We did however manage to pick up a couple of dear friends, David and Jason, who have become welcome additions to our production. Thank you for joining us lads!

We could, of course, never have enough men! So, if you fancy treading the boards and discovering your inner Michael Ball, please do not hesitate to approach me or a member of the society. We need munchkins and flying monkeys a plenty for our Spring 2009 production of *The Wizard of Oz*.

There are so many people involved in putting together a show I almost don't know where to start. So, I would like to thank EVERYONE! This has not been an easy year for me and I could not have made it through with my sanity intact without the love and support of every single one of the society members. You have all contributed to the success of this production and I am so immensely proud of every single one of you all. Thank you from the bottom of my heart for everything!

Watching this show develop under the careful direction of Gail Ashwell and Mark Newport's patient musical genius has been wonderful! Although I must say, I am somewhat envious of all those taking part on stage, and will have to strap myself in to my seat so I don't throw myself on stage mid-performance! It is one of those shows though, you just can't help being magically transported to those exciting times. The energy and enjoyment the cast put in to this production is electric and I have no doubt in my mind that you will enjoy every moment of it as much as they do!

Natalie O'Sullivan



Singin' in the Rain

Singin' in the Rain was one of the last in a string of MGM musicals which spanned from the late 1920s to the 1950s, all produced by Arthur Freed.

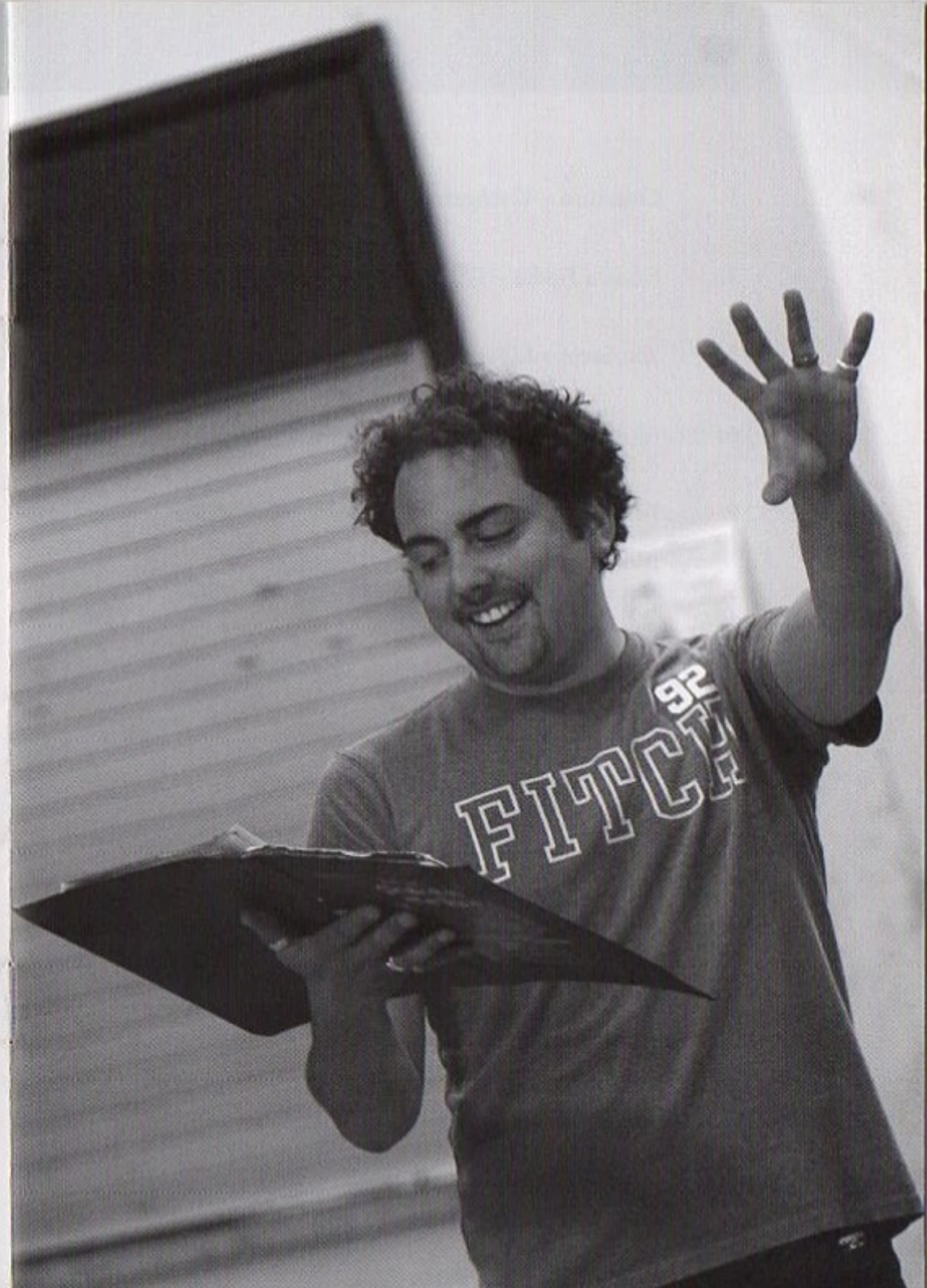
It is a musical comedy which pokes at Hollywood's manic shift from silent movies to the new "talkies". It is also a love story between a big movie star, Don, and a country girl who has come to Hollywood to be a star, Kathy.

The plot introduces a leading lady, Lena, who, after having found fame in the silent films, does not transfer so well to those with sound! This is due to her having an irritating, shrieky and nasal voice with a lower class New "Yawk" accent! She also has an unhealthy infatuation with her leading man, Don Lockwood, who does not return her insistent advances.

RF Simpson, the man responsible for making Lena and Don the Hollywood successes that they are, decides that unless they follow in the footsteps of competitors and start filming in stereo then their careers are doomed! But, how will Lena's adoring public react when they realise that this Silver Screen Idol does not have a voice to match her beauty!?

To avoid the obvious failure of the production, another girl is selected to 'dub' her voice (Kathy Seldon)! This results in the perfect solution but this does not meet with Lena's approval, not only because Kathy has stolen her glory but also her man! The plotting and planning along with the comic genius of Cosmo, Don's lifelong partner in crime, all adds up to situations at which you cannot help but laugh out loud.

Will it end in triumph, tears or an Oscar winning production? Maybe all three! You'll have to sit tight and see what happens...



Musical Synopsis – Act One

1. Overture – Orchestra
2. Fit as a Fiddle – Don & Cosmo
3. You Stepped Out of a Dream – Kathy, Don & Chorus
4. All I Do is Dream of You – Kathy & Girls
5. You Stepped Out of a Dream (Reprise) – Don
6. Make 'em Laugh – Cosmo
7. Beautiful Girls – Production Singer
8. You are My Lucky Star – Kathy
9. You Were Meant for Me – Don
10. Moses – Don & Cosmo
11. Good Morning – Kathy, Don & Cosmo
12. Singin' in the Rain – Don

Musical Synopsis – Act Two

13. Entr'acte – Orchestra
14. Would You – Kathy
15. What's Wrong with Me? – Lina
16. Broadway Melody – Cosmo, Don & Chorus
17. You Are My Lucky Star (Reprise) – Kathy & Don
18. Singin' in the Rain – Company





Cast of Characters in order of appearance

Dora Bailey **Greta Jenkins**

Zelda Zanders **Julia Harris**

Olga Mara **Marjolein Out**

Mary Margaret/Young Don/Lady in Waiting/3rd Assistant Director
Laura Cody

R.F. Simpson **Martin Isbister**

Roscoe Dexter **Olly Lockwood**

Cosmo Brown **Jason Thorpe**

Lina Lamont **Helen White**

Don Lockwood **David Stone**

Young Cosmo **Savella Kitanos**

Villain/Production Singer/Sound Engineer **Nic Corden**

Rose **Naomi Delamore**

Kathy Seldon **Verity Stansall**

Policeman **Richard Bodek**

Butler **Les Gershman**

1st Assistant Director **Fiona Cuthbert**

2nd Assistant Director **Sunny Carter**

Wardrobe Mistress **Sally Pearson**

Hairdresser **Marina Diacopoulos**

Sid Phillips **David Dowse**

Miss Dinsmore **Sandra Ashworth**

Don's Voice Teacher **Caroline Cody**

Other Characters and Company

Sue Pritchard, Carolyn Sobers, Marie Isbister,
Robert Jones, Nick White, Eleanor Johnson



Cast



David Stone *Don Lockwood*

David is thrilled to be playing the part of *Mr Lockwood* in his debut with ELODS. David has enjoyed playing many fun and challenging roles in shows he never thought he would get the opportunity to perform in, such as *Paul San Marco* in *A Chorus Line* and *Britney* in *We Will Rock You*. Most recently he played a set of twins in *When it Rains*. You may have seen David treading the boards with *Green Room* in *Potters Bar*, in roles such as *Mrs Meers* in *Thoroughly Modern Millie*, *Emcee* in *Cabaret* and *Harry Blitzen* in *Blitz*. He hopes you enjoy the show as much as he's enjoyed being a part of it.



Verity Stansall *Kathy Seldon*

Verity is very excited to be playing *Kathy* in her third show with ELODS. Previously she has played *Bebe* in *A Chorus Line* and *Eponine* in *Les Miserables*. Verity has recently started studying at East 15 Acting School and is a member of the National Youth Theatre. She hopes you enjoy the show and cannot imagine a better way to celebrate her birthday week (yes, she needs a week!)



Helen White *Lina Lamont*

Helen is a trained dancer and in her youth enjoyed some professional engagements! An ELODS member for 17 years, she's delighted to play *Lina Lamont* - a 'colourful' character and adds it to a list of favourite roles such as *Eliza Doolittle*, *Laurie (Oklahoma)* and *Calamity Jane*. She has also enjoyed the challenge of being co-choreographer, though hard work sometimes! She hopes you enjoy the show.



Jason Thorpe *Cosmo Brown*

This is Jason's first show with ELODS and he's very excited to be playing *Cosmo Brown*. Jason is a familiar face at the Harlow Playhouse having been in such shows as *Cabaret*, *The Wizard of Oz*, *Little Shop of Horrors* and *West Side Story*. Recently he performed with FFBS in *Grand Hotel* and with In the Arts in *A Chorus Line*.



Martin Isbister *R.F. Simpson*

Singin' in the Rain marks my ELODS debut and having enjoyed the weeks of rehearsal I look forward to many more. Being no stranger to musicals I have taken roles in *Oliver!*, *Annie*, *Annie Get Your Gun* and *Calamity Jane*. Plays that I have acted in are *Our Country's Good*, *Taking Steps*, *Mephisto* and *King Lear* to name but a few. A highlight would be doing the West End film premiere of *The Noisy Neighbour* in which I played one of the principals. Enjoy the show, I know RF Simpson will!



Olly Lockwood *Roscoe Dexter*

With the notable exception of a sleigh-riding role in his primary school as *Grandfather Tarka*, *King of the Elves*, Olly made his stage debut in the Spring 2008 ELODS production of *Annie*. Whilst he enjoyed the costume challenge posed by attempting to be a tramp, cabinet minister and secret service agent in the same show, Olly is greatly looking forward to having an actual named part in *Singin' in the Rain*. He hopes you and the rest of the cast can forgive him for forgetting his lines.



Naomi Delamore *Rose*

Naomi is thrilled to be playing *Rose* in *Singin' in the Rain*. Her character was originally a male role and during rehearsals Naomi was often referred to as 'Rod' by company members who had forgotten to amend their scripts. Issues of gender confusion aside, Naomi found this the most fun show she has rehearsed since joining the company and can't wait for show week. She is super excited and hopes you will be too.



Greta Jenkins *Dara Bailey*

Greta has worked with ELODS for many years and has specialised in playing a string of eccentric old biddies such as *Frumah Sarah* in *Fiddler on the Roof* (twice), *Aunt Ella* in *Oklahoma* (twice); *Gran* in *Billy*, *Doatsie Mae* in *Best Little Whorehouse* and other minor old dears. She is looking forward to adding *Dara Bailey* to the list!



Caroline Cody *Don's Voice Teacher*

Caroline has been a member of ELODS for nearly 30 years and in that time has taken several leading roles. In the latter years, those have manifested themselves into playing bossy, old bags like *Golde* in *Fiddler on the Roof*, *Katisha* in *Hot Mikado* and now the teacher in this production of *Singin' in the Rain*!!! Caroline has thoroughly enjoyed working with David and Jason and hasn't laughed so much in a while!!!



Nic Corden *Villain/Production Singer/Sound Engineer*

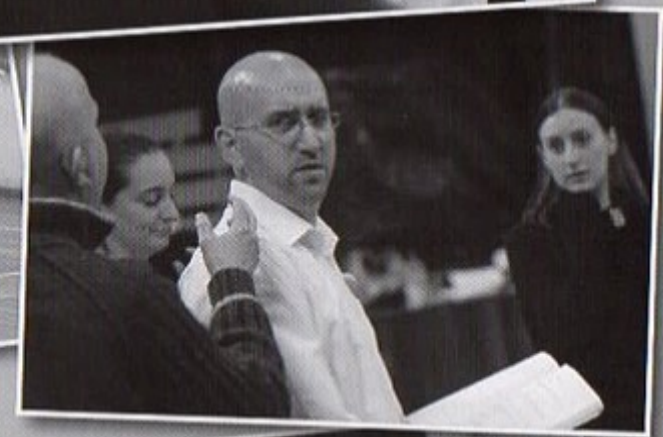
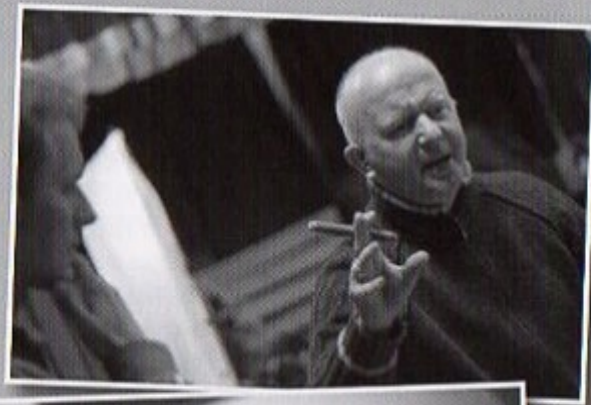
Nic is delighted to be playing an anybody and everybody! He loves the dancing and the costume change challenges too. As a bonus he gets a whole number to sing on his own!



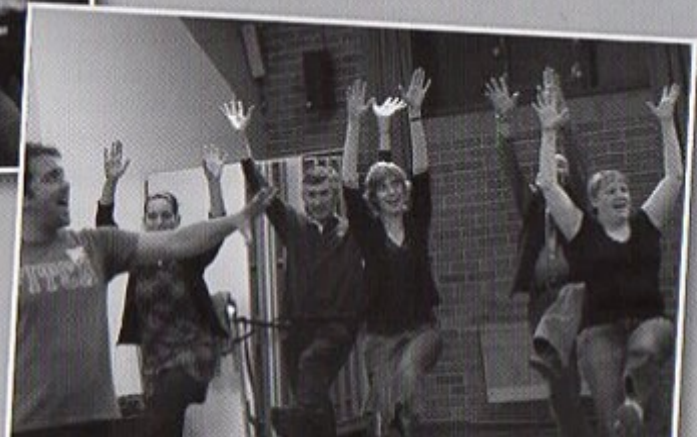
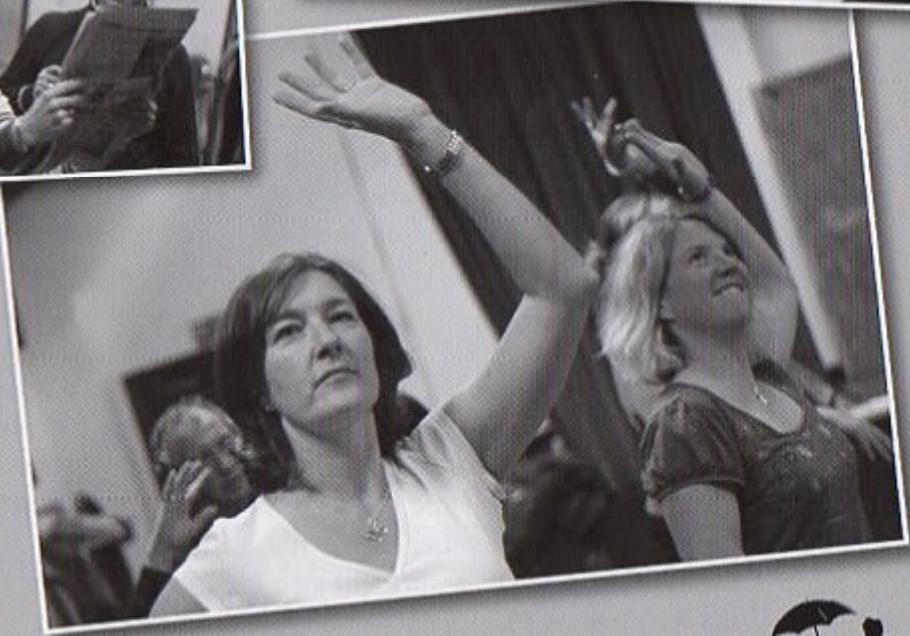
Julia Harris *Zelda Zanders*

A lovely little cameo role with lots of beautiful dresses to wear. How lucky is that?! I am sure you will enjoy this happy show with many songs to sing on your way home.





Rehearsals...



Production Team – The Directors

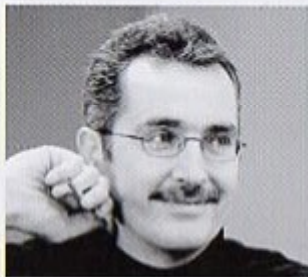


Gail Ashwell - Director

Gail is a professional actress and director who has worked in radio, television and theatre. She won the Carlton Hobbs radio award from drama school. Most of her career has been spent in repertory companies throughout the UK.

She hasn't worked with ELODS since *My Fair Lady* because she has been busy working in fringe theatre and television. She did many shows at Pentameters Theatre in Hampstead. She is now a teacher at Arts Educational Pupils' School, teaching voice and acting to young actors. Gail lives in Enfield and has two grown up children. She has thoroughly enjoyed directing *Singin' in the Rain* for ELODS. What a fantastic company they are!

Mark Newport - Musical Director



Mark is currently working on *Les Miserables*, for which he has conducted performances in both London's West End and on the UK tour. Other West End credits include *Woman In White*, *Sunset Boulevard*, *Phantom of the Opera*, *Starlight Express*, *Martin Guerre*,

Bombay Dreams, *Chicago*, and *The Goodbye Girl*. As Musical Director he has performed at Sadler's Wells, The Mermaid (Royal Gala), Whitehall and Bloomsbury theatres. He was also Assistant Conductor for Opera East on six national tours. Mark is a member of the musical staff at the Guildford School of Acting and also Mountview. *Singin' in the Rain* will be Mark's 45th show for ELODS!

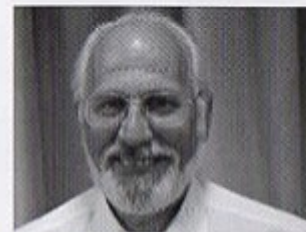
Production Team

The Production Team

Director – Gail Ashwell
Musical Director – Mark Newport
Choreographer – Helen White
Stage Manager – Frank Bundle
Lighting – Steve Bates
Sound – Tom Course
Set – Frank Bundle
Wardrobe – Hilary Thorne
Properties – Eleanor Glazer
Photos – XM04
Poster Design – Caroline Cody, Christopher Cody
Ticket Secretary – Wendy Bundle
Mailing List – Sally Pearson
Front of House – Angela Crick, Stella & Andy Kitanos
Advertising – Sunny Carter
Publicity – Sandra Ashworth
Programme – Natalie O'Sullivan
Stewart Leather, Samantha Stringle

For Wylyotts Theatre

General Manager
Ginny Williams
Operations Manager
Christopher Edwards
Technical Manager
Graham Cutting
Marketing Manager
Debbie Wiltshire
Customer Services Manager
Jackie Houslop



Frank Bundle, Stage Manager



Eleanor Glazer, Properties and Hilary Thorne, Wardrobe

ELODS would like to thank the following people: the members of the orchestra, all the technical team and backstage crew, the first aiders at the Wylyotts Theatre, the front of house volunteers, all our advertisers, Data Connection, "Friends" of ELODS and our patient families!

Greasepaint Anonymous

Established 1985
Winchmore Hill



Due to promotion we have vacancies available for students aged 4-7 in our "Introduction to theatre for the very young" class.

0208 886 2263

www.greasepaintanonymous.co.uk

ELODS needs YOU!

Would you like to be involved in any way in future productions?

We are always looking for more performers (especially men!).

Help is always needed back stage and front-of-house too.

If you like what you see on stage, come and join us!

For further details in relation to any of the above please visit our website or email Natalie O'Sullivan at natalie@theluxor.co.uk

www.elods.org.uk

The following people would like to wish ELODS every success with their production of Singin' in the Rain.

Brian Ashworth

Carol Ashworth

David Ashworth

Margaret Ashworth

Corinne Asghar

Brian Butler

Carole Butler

Jackie Christian

Simon Colton

Marjorie Cross

Mr & Mrs Cuthbert

Megan Deane

Clifford Dickson

Jessie Dickson

Lexie Hall

Victoria Hall

Stella & Andy

Kitanos

Mr & Mrs Lockwood

Des Mohan

Anne O'Sullivan

Jonathan O'Sullivan

Michael O'Sullivan

Ben Shaw

Katie Shaw

Claire Smith

CJ Somers

Maddy Somers

Peter Somers

Samantha Stringle

Diane Stringle

Hilary Thorne &

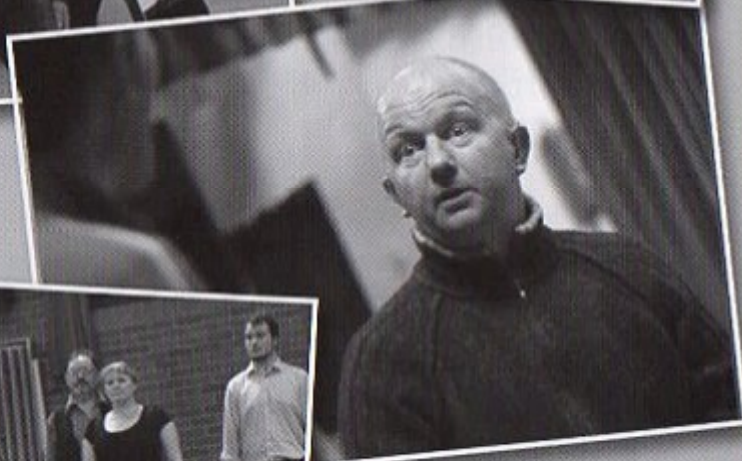
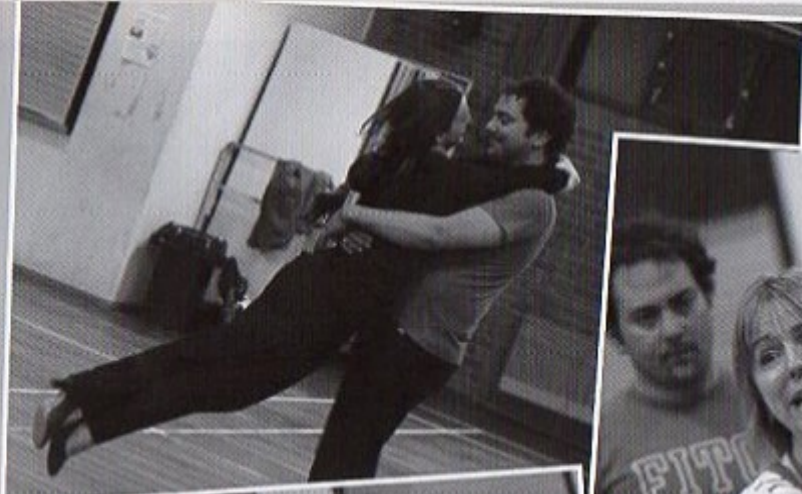
Family

Renaisi Tate

The Retired

Greyhound Trust

M Vainer Ltd





drip... drip... drip...

Is that the sound of your recruitment budget leaking away?

Tate is the only agency to offer you a 100%, no quibble Watertight Guarantee.

No, there isn't a catch, there isn't even a time limit. We are so committed to the quality of our service that we guarantee it. If you're not completely satisfied with your Tate temp or the Tate service, you won't pay a penny, it's as simple as that!

If this all sounds too good to be true, you should find out more about Tate's permanent guarantee – a 100 day guarantee period and a staggering 110% refund.

We have offices across the country including Hertfordshire and London. To experience Tate's first class service contact your nearest office today!

St Albans – 01727 844799

London, West End – 020 7408 0424

You have nothing to lose – not even money!



www.tate.co.uk



*Good Morning,
Good Morning
to You*

*Meeting at cineworld, Enfield
Sundays at 10am
All Welcome*



jubilee church

it's all about Jesus

PIANO LESSONS

Vivienne Barnes

B.A., L.R.A.M., P.G.C.E

You can be sure of **FRIENDLY,**
EXPERT teaching.

I am **WELL QUALIFIED** and
have lots of **EXPERIENCE.**

Enfield EN2

Ring 020 8363 4920



The Nightingale Community Hospice Trust

The Nightingale Community Hospice Trust was founded in the summer of 2002 as a charity to provide support, help and information to people with cancer and their families living in the borough of Enfield.

All the services are free to clients/carers and include:-

Drop-ins on Wednesday and Friday afternoons from 1.30–4.30 pm

Complementary therapies • Counselling • Carers support

Home sitting/befriending service • Night Sitting • Bereavement Group

Lymphoedema Clinic • Advice and Information Services

For further information please contact Sally Ainsworth 020 8366 4333

The Nightingale Community Hospice Trust

53 Lancaster Road Enfield Middlesex EN2 0BU

registered charity no1094435

WeightWatchers®

WEIGHT WATCHERS IS CHANGING

SO IF YOU WANT TO EAT HEALTHY FILLING FOODS AND LOSE WEIGHT

JOIN YOUR LOCAL Weight Watchers MEETING TODAY

And if you bring this program to a Weight Watchers meeting in Enfield or Southgate you will obtain FREE registration and your FREE gift to help you on your weight loss journey.

Call Peter NOW on 07836 324 692 and find out details about your nearest meeting or visit
www.weightwatchers.co.uk

DYNASTART

AUTO ELECTRICAL ENGINEERS & CRASH
REPAIR SPECIALISTS

MOT CENTRE - 6 Days, by Appointment
No Retest Fee

Servicing - Batteries - Tyre Fitting/Balancing

Latest Diagnostics Equipment

Free Pick Up & Delivery

Competitive Prices

12 BARNET ROAD, POTTERS BAR,
HERTS EN6 2QS



TEL: 01707 644465

L. Wren (Jeweller)

est. since 1969

53 Darkes Lane, Potters Bar
Hertfordshire, EN6 1BJ

Tel: Potters Bar 01707 656373

For 'Something Different'
in Gold and Silver Jewellery

Jewellery and Watch Repairs

Watch Batteries

Valuations - Insurance or Probate

Gift Wrap Service

Thank you for supporting your local shops

ELODS past productions

1953	Trial by Jury	1986	The Mikado
1954	HMS Pinafore		Oh! What A Lovely War
1955	The Gondoliers	1987	Finians Rainbow & Cabaret
1956	Iolanthe & Patience	1988	Godspell & Goldilocks
1957	The Mikado		The Three Bears
1958	Yeoman of the Guard	1989	The Pirates of Penzance
1959	Trial by Jury		Chicago
1960	The Pirates of Penzance	1990	The Pyjama Game
1961	The Gondoliers		Little Mary Sunshine
	The Gypsy Baron	1991	The Good Companions
1962	Iolanthe		Princess Ida
1963	HMS Pinafore	1992	Half A Sixpence
1964	Brigadoon		Guys and Dolls
1965	The Mikado	1993	Kiss Me Kate
1966	La Belle Helene		The Wizard of Oz
	Trial by Jury	1994	Fiddler On the Roof
1967	Ruddigore		The Mikado
1968	Lilac Time	1995	42nd Street Anything Goes
	Music Hall	1996	Billy
1969	Yeoman of the Guard		Annie
1970	Merrie England	1997	Sweet Charity
	Me and My Girl		High Society
1971	Orpheus in the Underworld	1998	My Fair Lady & Godspell
	G & S Concert & Music Hall	1999	Crazy For You
1972	Brigadoon & The Boyfriend		Me and My Girl
	G & S Concert	2000	How to Succeed in Business...
1973	Oklahoma & The Mikado		Oklahoma!
1974	The Pyjama Game & Salad	2001	Hello, Dolly
	Days		The Best Little Whorehouse
1975	Fiddler on the Roof		in Texas
	How to Succeed in Business	2002	Sugar
1976	Iolanthe & Music Hall		Fiddler on the Roof
1977	Flappers and Flannels	2003	The Boardwalk Gondoliers
	Maid of the Mountain		South Pacific
1978	Oh! What a Lovely War	2004	Cabaret
	Orpheus In The Underworld		Calamity Jane
1979	Free As Air & The Arcadians	2005	The Pirates of Penzance
1980	Music Hall & Cabaret	2006	High Society
1981	Carousel & Call Me Madam		Carousel
1982	Sweet Charity & The Card	2007	Oliver!
1983	Memories & The Gondoliers		Hot Mikado
1984	States Alive	2008	Annie
	Fiddler On The Roof		Singin' in the Rain
1985	The Sorcerer		
	Oklahoma !		



Did you enjoy the show?
We certainly enjoyed performing it for you!

Hopefully we've entertained you enough
to interest you in our next production!

If so, then please visit our website at
www.elods.org.uk
for details of forthcoming productions.

Have a safe journey home and we look
forward to welcoming you back to
the Wylllyotts soon!



ELODS is affiliated to the National Operatic and Dramatic Association