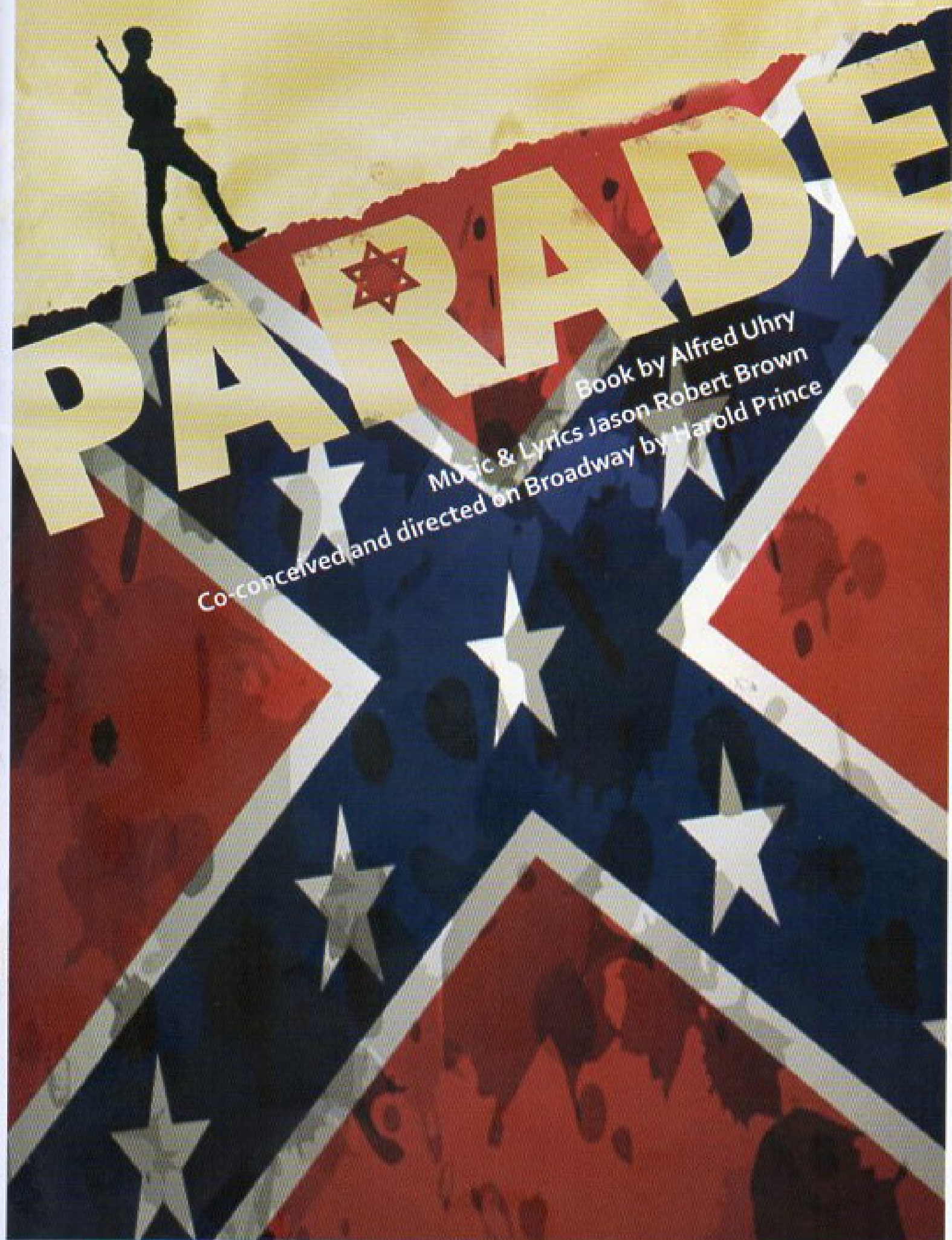


ELODS presents

This amateur production is presented by arrangement with JOSEF WEINBERGER LTD.  
on behalf of Music Theatre International of NEW YORK.



Book by Alfred Uhry  
Music & Lyrics Jason Robert Brown  
Co-conceived and directed on Broadway by Harold Prince



Leo M. Frank

# THE CASE OF LEO FRANK

*Parade* dramatizes the true story of Jewish factory manager Leo Frank. On Confederate Memorial Day, 1913, 13-year-old Mary Phagan was brutally murdered in the pencil factory where she worked, in Atlanta, Georgia. The last person to admit seeing her alive was Leo Frank, who was an Ivy League-educated Northerner. Local newspapers, led by William Randolph Hearst's *Atlanta Georgian*, ran wild with the story. During the month-long trial, Jim Conley, a man with an extensive criminal record, accused Frank of murdering Mary after she rejected his advances, while Frank himself was unable to provide a clear account of events. Frank was sentenced to death.

In the aftermath of Frank's conviction, the Rabbi of Atlanta's largest Synagogue travelled to New York to raise Frank's case with the Jewish community there. Soon, a group including Adolph Ochs, publisher of *The New York Times*, and influential Jewish capitalists and lawyers became involved. During an appeals process that ultimately lead to the Supreme Court, these men spent, in today's money, millions of dollars in an attempt to exonerate Frank.

However, in a region still reeling from defeat in the Civil War, the efforts of Frank's Northern champions were not well received. In the pages of his influential newspaper, *The Jeffersonian*, Tom Watson attacked what he saw as the interference of Northern Jews, who were trying to subvert the judgement of the Georgia courts. "Jew money has debased us, bought us, and sold us – and laughs at us. In the name of God, what are the people to do?"

For two years America was transfixed by the case. It was regularly on the front pages of *The New York Times* and featured in weekly magazines, and was the topic of newsreels and a documentary film. There were petition drives, mass meetings and public protests. In June 1915, on the eve of the execution, Georgia Governor John Slaton, unconvinced by the evidence against him, commuted Frank's death sentence to life imprisonment. This brought events to a climax, destroying Slaton's political career and inspiring a terrible outburst of anti-Semitism.

The events surrounding the investigation and trial led to two groups emerging: the revival of the defunct KKK and the birth of the Jewish Civil Rights organization, the Anti-Defamation League (ADL). Many theories exist as to the real identity of the killer, mostly pointing the finger of blame at Jim Conley or Leo Frank. More than a century after her death, we are no closer to discovering who actually killed Mary Phagan.



Mary Phagan



*Arts & Crafts*  
Potters Bar Theatre Company

# Absent Friends

by Alan Ayckbourn

This award-winning musical Absent Friends is presented in association with the Potters Bar Theatre Company

24th - 28th October at 7.30pm & 2.30pm Saturday  
At Tilbury Hall, Darkes Lane, Potters Bar

*Arts & Crafts*  
Potters Bar Theatre Company

# CHESS

## THE MUSICAL

Music by Benny Anderson and Bjorn Ulvæus  
Lyrics by Tim Rice based on an idea by Tim Rice

This award-winning production of "Chess" is presented by special arrangement with SAM & JANE, LTD.

21st - 25th November 2017 at 7.30pm & 2.30pm Saturday  
At Wylllyotts Theatre, Darkes Lane, Potters Bar

BOX OFFICE : 07985 542204  
TICKETSOURCE.CO.UK/PBTC

# ENFIELD LIGHT OPERATIC & DRAMATIC SOCIETY

## COMMITTEE

Chairman	Mark Shaw
Secretary	Rich Stoughton
Treasurer	Frank Bundle
Membership	Angela Crick
Production Manager	Fiona Corden
Social	Alison Hall
Publicity	Sarah Henderson
General	Corinne Roberts, Victoria Santamaria Cannaford

## MESSAGE FROM THE CHAIR

Welcome to our 2017 Autumn Production; the critically acclaimed *Parade*.

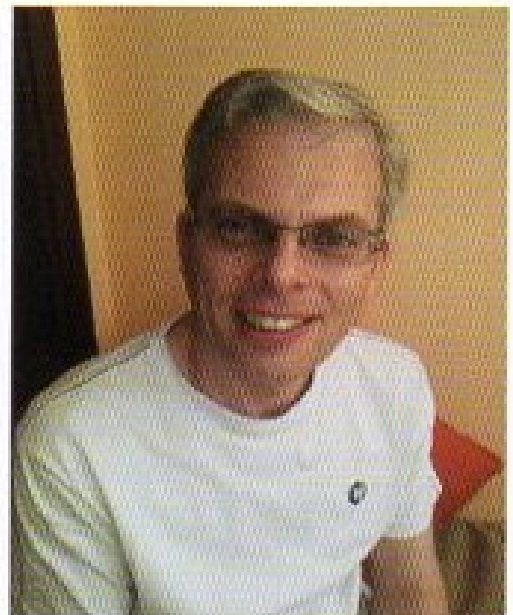
With a cast of more than 40, this is a huge, challenging show to produce, and we are delighted to welcome back Simon Knight (who directed ELODS' productions of *Acorn Antiques* and *Jesus Christ Superstar*) as Director and Choreographer. We would also like to welcome Matthew Greenbank in the role of Leo Frank.

I am proud to tell you that at the recent London NODA awards, Sarah Henderson was District 7 winner for her performance as Adelaide in *Guys & Dolls* and we also won best chorus in the same show. Congratulations also to our ever-present Musical Director, Mark Newport for his Lifetime Achievement award for services to ELODS, and to Sunny Carter for her work behind the scenes for *Guys & Dolls*.

At ELODS, we are proud to present some lesser-known shows, and we hope you enjoy the thought-provoking, emotional *Parade*. Although the show is set more than a century ago, its themes of injustice and racism continue to resonate in the modern world.

Thank you for your continued support.

**Mark**



# MUSICAL NUMBERS

## ACT ONE

**Prologue: The Old Red Hills of Home**  
*Young Soldier, Old Soldier, Ensemble*

**The Dream of Atlanta**  
*Ensemble*

**How Can I Call this Home?**  
*Leo, Ensemble*

**The Picture Show**  
*Frankie, Mary*

**Leo at Work/What am I Waiting For?**  
*Leo, Lucille*

**Interrogation Sequence**  
*Newt Lee*

**Funeral (There's a Fountain/It Don't Make Sense)**  
*Frankie, Ensemble*

**Watson's Lullaby**  
*Tom Watson*

**Something' Ain't Right**  
*Dorsey*

**Real Big News**  
*Britt Craig, Ensemble*

**You Don't Know This Man**  
*Lucille*

### **The Trial:**

**Hammer of Justice:** *Tom Watson, Ensemble*

**Twenty Miles from Marietta:** *Dorsey*

**Frankie's Testimony:** *Frankie, Mary, Ensemble*

**The Factory Girls/Come Up To My Office,** *Iola, Essie, Monteen, Leo*

**Minnie's Testimony:** *Tom, Minnie*

**My Child Will Forgive Me:** *Mrs Phagan*

**That's What He Said:** *Jim Conley, Ensemble*

**It's Hard to Speak My Heart:** *Leo*

**Closing Statement and Verdict:** *Ensemble*

# MUSICAL NUMBERS

## ACT TWO

**Prelude**  
*Ensemble*

**A Rumblin' and a Rollin'**  
*Riley, Angela*

**Pretty Music**  
*Governor Slaton*

**The Glory**  
*Judge Roan, Dorsey*

**This is Not Over Yet**  
*Leo, Lucille*

**Factory Girls Reprise**  
*Iola, Essie, Monteen, Leo, Lucille*

**Minnie McKnight Reprise**  
*Minnie, Leo, Lucille*

**Blues: Feel the Rain Fall**  
*Jim, Ensemble*

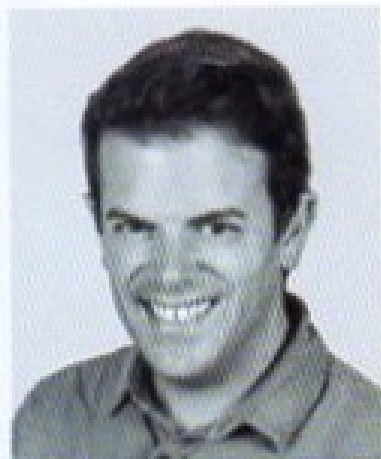
**Where Will You Stand When the Flood Comes?**  
*Tom Watson, Dorsey, Ensemble*

**All the Wasted Time**  
*Leo, Lucille*

**Finale**  
*Leo, Lucille, Frankie, Ensemble*

Please note that the taking of photos or videos is prohibited, and please switch off mobile phones during the performance. Our ushers will be forced to ask any persons not complying with this request to leave the auditorium.

# PRODUCTION TEAM



## **Simon Knight - Director**

Simon is delighted to be directing *Parade* for ELODS. He is a huge fan of the composer (Jason Robert Brown) after having directed two of his other shows *The Last 5 Years* and *Songs For A New World*. The audience is in for a treat!

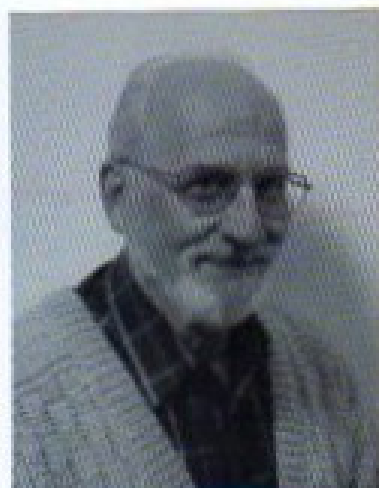
Directing/Choreography Credits -

*The Full Monty, Acorn Antiques, Tick Tick Boom, The Sound Of Music, Jesus Christ Superstar, Children Of Eden, Spring Awakening, Bad Girls, Witches Of Eastwick, Sweet Charity, Grand Hotel, Company, When It Rains, Fiddler On The Roof.*



## **Mark Newport - Musical Director**

Mark has now been working with ELODS for 30 years. Alongside this and teaching commitments he has had a successful career in London's West End, working for many years on *Les Miserables*, for which he has conducted performances in both London's West End and on the UK tour. Other West End credits on keyboards include *Bombay Dreams, Cats, Chicago, Martin Guerre, Phantom of the Opera, Starlight Express, Sunset Boulevard, The Goodbye Girl*, and *Woman in White*. As Musical Director he has performed at Sadler's Wells, The Mermaid (Royal Gala), Whitehall and Bloomsbury theatres. He was also Assistant Conductor for Opera East on six national tours. Mark has taught at Guildford School of Acting, Mountview and Guildhall and is a member of the Music Staff at Queenswood School, Hertfordshire. *Parade* is Mark's 63rd show with ELODS!



## **Frank Bundle - Stage Manager**

Frank has been involved in amateur theatre for over 35 years. He became involved with ELODS when asked to crew for *Sweet Charity* in 1982. He has subsequently stage managed every major production bar one, and has been involved in the design and construction of the sets for several of our more recent shows. In 2011 he was presented with the prestigious NODA Flame Award for services to amateur theatre. *Parade* is Frank's 67th production with ELODS.

# PRODUCTION TEAM



## **Fiona Corden - Production Manager**

This is Fiona's fifth show as Production Manager and she is now fully versed in the licensing of children and animals, the dimensions of the Wylllyotts' wings and the best times to ask the treasurer for more budget. She sends a huge thank you to everyone involved with the production of *Parade*.



## **Greta Jenkins - Production Secretary**

Greta's professional theatrical experience includes working as Agent, Producer and Vice Principal of a central London drama school, and as a tutor has included TV, films and the RSC. She now produces plays and shows locally. In ELODS Greta has also played many roles over the years, but unfortunately seems to have specialised in rather bonkers trollops. No comments please.



## **Hilary Thorne - Costumes**

Having been introduced to ELODS in 1993 through my daughter, I have been wardrobe mistress for 24 years, this being my 49th show. I hope you all have a fun evening and wish all the cast and crew good luck and enjoy yourselves show week.



## **Lesley Clay - Props**

After a night out discussing what we would like to do if we were starting over, I let it be known that I would love to do props or costumes for the film/T.V. industry. This led the Chairman of ELODS to ask if I would be interested in helping with the props for *Fiddler on the Roof*. He didn't have to wait long for my response. I promised I would be available for show week and thought to myself, what have I got to lose? If I don't like it I only have to do one show! Well the rest is history, I loved it and this will be my 5th show. I love sourcing the props and show week with the excitement of each performance. Thank you ELODS for making me so welcome.

GILBERT & SULLIVAN'S

# RUDDIGORE

7-10 February 2018

Evening performances 7.30pm  
plus Saturday Matinee 2.30pm

Wyllyotts Theatre  
Potters Bar

[www.tickets.wyllyottstheatre.co.uk](http://www.tickets.wyllyottstheatre.co.uk)

BOX OFFICE  
**01707 645005**

  
Southgate Opera  
[www.southgateopera.co.uk](http://www.southgateopera.co.uk)

**Help us build  
the children's  
hospice London  
desperately needs**



**BUILDING THE ARK**

**[BuildingTheArk.org.uk/](http://BuildingTheArk.org.uk/)  
GiveAnHour**

Registered Charity No. 1081156



**92.6FM  
RADIO VERULAM**

and online at [www.radioverulam.com](http://www.radioverulam.com)  
**Greasepaint and Stage Lights with Mark Bilsby**  
Tuesday nights at 9pm

Tune in every week to hear the latest news, gossip and reviews of shows and plays both professional and amateur. Great music, great chat and your requests played on air. Email your requests to [mark@radioverulam.com](mailto:mark@radioverulam.com) or visit better @verulamscale. You can even find us on Facebook.

If you are a drama group and would like my show to promote your next big production email me or give me a call on 07861 299696

# **PRODUCTION TEAM**

Director/Choreographer - **Simon Knight**

Musical Director - **Mark Newport**

Production Manager - **Fiona Corden**

Production Secretary - **Greta Jenkins**

Stage Manager - **Frank Bundle**

Lighting Design - **John Castle**

Sound - **Peter Donaghey**

Set Design - **Simon Knight, Frank Bundle**

Wardrobe - **Hilary Thorne**

Photos - **Martin Brannigan (Eye Definition Photography)**

Properties - **Lesley Clay**

Poster / Flyer Design - **Sunny Carter**

Front of House - **Michelle Shaw**

Programme - **Corinne Roberts, Sunny Carter, Alison Hall, Naomi Delamore**

## **BAND**

Violin - **Lucia D'Avanzo-Lewis**

Viola - **Sebastian Lee**

Cello - **Lawrence Durkin**

Bass - **Alan Coughlan**

Clarinet - **Mark Hayes**

French Horn - **Eddie Morgan**

Percussion - **Adam Cowburn**

MD/Keyboard - **Mark Newport**

## **FOR WYLLYOTTS THEATRE**

General Manager - **Ginny Williams**

Operations Manager - **Chris Edwards**

Technical Manager - **Peter Windsor**

Marketing Manager - **Debbie Wiltshire**

The Georgian Will Pay \$500 Reward for Exclusive Information Leading to the Arrest and Conviction of the Murderer of Mary Phagan :-: :-: :-:

\$5

**THE FRANK CASE**



Inside Story of Georgia's Greatest Murder Mystery  
Complete History of The Sensational Crime and Trial, Portraits of Principals

Published by THE ATLANTA GEORGIAN ATLANTA, GA.

# THE ATLANTA

Read For Profit—GEORGIA

ATLANTA, GA.,

## TESTED AS

CITY A-FLUTTER  
OVER...

JOHN

## THE ATLANTA

Read For Profit—GEORGIA

ATLANTA, GA.,

## POLICE HAVE

AUSTRIA WILL  
MOVE ALONE ON  
MONTENEGRO



DETAILS OF BIG  
PONY CONTEST  
ANNOUNCED

VOLS

FIRE

Montenegro's Army Leaves Scari-  
tari to Republic Threatened In-  
vasion by Austria to Gird Little  
Kingdom From Spoils War.

King Nicholas, GA.,

## FRANK INDICTED IN PHAGAN CASE

He Will Not Go to Trial Be-  
fore the Latter Part of  
June, According to Solic-  
itor General Dorsey.

Leo M. Frank, indicted Saturday afternoon for the murder of Mary Phagan, the 14-year-old girl whose dead body was found at 3 o'clock on the morning of April 27 in the basement of the National Pencil factory, will not go to trial before a statement was made last night.

Newt Lee, the negro night watch man, who called the police to the place, was left under consideration by the grand jury. A bill of indictment charging him with the same murder was presented to the grand jury and the bill against the factory superintendent, but the grand jury failed to act, and it is believed that his case will be allowed to rest, pending the action of the indicted man.

## FRANK MURDERED WITHIN HOUR AFTER DIN

Witnesses Called to Stand to Testify Against Frank



DR. H.F. H  
GIVES S  
EVIDEN  
TIME

Probes Start Tuesd

AMASSHOON WILSON'S  
REPORT CONTRADICTED  
SALOON MEN LOSE  
IN MASON COURT

BANKERS TO FORM  
ADVISORY BOARD

OO REWA  
TA GEORGIAN  
WANT ADS—Use For Results  
DAY, APRIL 28, 1913

NOT GUILTY, SAY  
BOTH PRISONER

Leo M. Frank and the Night  
Watchman, Newt Lee, Re-  
iterate Declarations of In-  
nocence in Phagan Crime.

Leo M. Frank yesterday morning in

TA GEORGIAN EXTRA No. 6  
WANT ADS—Use For Results  
DAY, APRIL 28, 1913

THE STRANGLER

Late this afternoon, Chief of Detectives Lanford made this important statement to a Georgian reporter: "We have the strangler. In my opinion the crime lies between two men, the negro watchman, Newt Lee and Frank. We have eliminated John Cantt and Arthur Mullinax."

FRANK AND NEGRO ARE GIVEN "THIRD DEGREE"

order of Mary Phagan, who is a reporter for... in his arrest. He protested his innocence, and it is supposed to have been committed. In the presence of Mrs. P. C. Terrell, of 284... night, that she had not seen Cantt in three... "said Cantt, as he sat in the Marietta... went out in the hall again. After the game... small factory, and decided to go away and... Frank let up in... my shoes, and both of them got me get... White, who is employed in the pencil fac... company, and Bagley's brother. With the...

IN  
RADOY  
S BECK

THE SUNDAY

ATLANTA, GA. MON

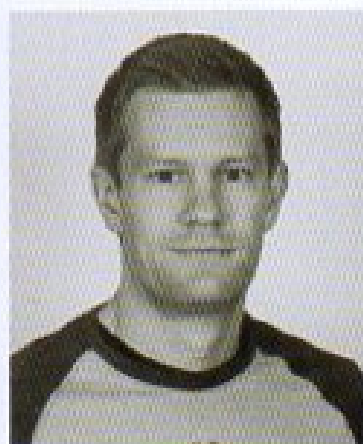
LEO FRANK'S TRIAL  
ON MURDER CHARGE  
BOOKED FOR TODAY

Judge L. S. Roan Announces  
That He Will Call Case at  
Nine O'Clock This Morn-  
ing.

Mary Phagan



# CAST



## **Matthew Greenbank - Leo Frank**

Matt fell in love with *Parade* when he first heard the music and is thrilled to have the opportunity to play the challenging role of Leo Frank in his first production with ELODS. His favoured previous roles include *The American (Chess)*, *The Voice of the Plant (Little Shop of Horrors)*, and *Judas (Jesus Christ Superstar)*. In his spare time, Matt enjoys crossfit, cooking, and playing guitar.



## **Katrina Boyd - Lucille Frank**

Katrina is delighted to be back with ELODS for this production of her beloved *Parade*. She has had the good fortune to perform in two other Jason Robert Brown shows – *The Last 5 Years* and *Songs for a New World*. *Parade* is a wonderfully intense piece, with gritty and challenging themes...a departure from Katrina's last ELODS outing in *Legally Blonde*! Other shows include *Grand Hotel*, *Jesus Christ Superstar*, *West Side Story*, *Guys and Dolls*, *A Chorus Line*, *Crazy for You*, *Sweet Charity*, *Little Shop of Horrors*, *Anything Goes*, *Fiddler on the Roof*, *The Witches of Eastwick*, *Bad Girls*, *Tick...tick...Boom!* and *Company*.



## **Andy Nicol - Hugh Dorsey**

Andy is delighted to be returning to the ELODS fold, having previously performed with the company in *Jesus Christ Superstar* and *How to Succeed in Business*. He's been mugging furiously and generally showing off in shows for 30 years now, and in April this year fulfilled one of his ambitions by performing the lead role in *Sweeney Todd* for FFBOS. He really hopes you enjoy this production of *Parade*, one of his favourite shows since seeing the UK Premiere at the Donmar exactly 10 years ago this month..



## **Stephen Milligan - Governor Slaton**

In searching for influences to assist with the characterisation of the all-singing, dancing politician that is Governor Slaton, 3 historical figures came to mind; Cash, Astaire and Kennedy. However.....Cash couldn't dance, Kennedy couldn't sing and I'll leave you to figure out Astaire's politics. One thing's for sure, if I was Governor, I'd defiantly introduce the brewing of beer to the National Curriculum. Enjoy the show.

# CAST



## **Henry Martin - Frankie Epps/Young Soldier**

Henry has been performing within the North London amateur circuit since 2012, and has had the pleasure of performing with ELODS in a number of fantastic shows. After a brief hiatus, he is excited to be back, performing in a show that has long been at the top of his list. He hopes that you enjoy the performance as much as he has!



## **Matt Fowler - Tom Watson**

Matt first took to the stage in Hans Anderson when he was 10 and has been involved in over 60 productions since. Favourite roles include, Tony (*West Side Story*), Joe Casey (*Our House*), Jesus (*Jesus Christ Superstar*), Don Lockwood (*Singin' in the Rain*) and Lonny (*Rock of Ages*).



## **Andre Beswick - Jim Conley**

Andre began performing in secondary school, but began his training as an actor at Bodens School of Performing Arts. Since then he has performed in shows such as *Hairspray*, *Batboy*, and *Les Miserables*.



## **Kaine Lawrence - Newt Lee/Riley**

Kaine is currently studying at Bodens College of Performing Arts. Credits Include: *Les Miserables* (Enjolras), *Parade* (Newt Lee), *Batboy* (Reverend), *Into the Woods*, *Dark of the Moon* (Uncle Smellicue), *Electra*, *Grimm Tales*, *24hours*, *Rainbows* (Giant), *Merry Wives of Windsor* (Falstaff). Kaine is delighted to have this opportunity, and wants to thank everyone who helped him get here.

# CAST



## **Bonnie Widger - Mary Phagan**

Bonnie has been dabbling mostly in production team work, but has changed her tune and gone for the stage; recently playing Kathy Selden in *Singin' in the Rain* opposite the fabulous Matt Fowler, who is also in the cast. *Parade* is her favourite show and so she couldn't resist auditioning! I hope you like it as much as she has enjoyed being in it!



## **Sarah Henderson - Mrs Phagan**

This is Sarah's fourth show with ELODS and she is loving the diversity: from the timeless *Fiddler* to the ever-suffering Miss Adelaide in *Guys and Dolls*, moving far too swiftly on to the exhausting frivolity of a Folly in *Crazy For You* and now to the tragedy of Mrs Phagan. What an amazing company and community to be a part of!



## **Robert Kemp - Luther Rosser**

Robert is a project manager for an architectural lighting company. New to ELODS, he is very excited to be in his first show since playing the donkey in his school nativity in 1990.



## **Nic Corden - Britt Craig**

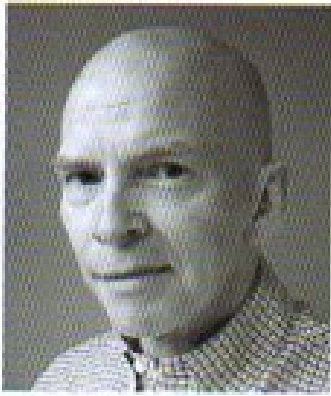
Having played many characters in his time with ELODS, Nic is delighted to be working with such an amazing group of actors in this dark but moving production. Britt Craig is an interesting character, a man who starts out taking advantage of the scoop, who later regrets his hand in stirring up the hatred.



## **Minnie McKnight - Lisa Nnando-Shillingford**

Treading the boards with my ELODS compadres is always a thrill and I am as pleased as punch to be playing the role of Minnie McKnight in this beautiful, moving and haunting production of *Parade*. Ready the Kleenex and enjoy the show.

# CAST



## **Roger Bunnage** - Judge Roan/Old Soldier

This is Roger's first musical in 37 years! After attending Mountview Theatre School, Roger developed his own character Arbie The Robot with TV appearances including *Morecambe and Wise*, *Tomorrow's World*, *That Mitchell and Webb Look*, and even the "mystery guest" on *Never Mind the Buzzcocks*. A regular on *Tricks'n'Tracks*, *The Movie Game*, and *Go Wild!* and 5 sweaty years as Barney The Dinosaur!



## **Jude Stoughton** - Iola Stover

Jude has played various roles with ELODS, the most recent being Polly Baker in our last production, *Crazy For You*. She is honoured to be a part of this talented cast in this amazing piece of theatre.



## **Lizzie Droy** - Essie

Lizzie is very happy to be back with ELODS having performed here at the Wylllyotts for their production of *Legally Blonde*. Since then she has played Dinah in *Starlight Express*, and will be playing Pearl in this year's production at the Dugdale in Enfield. Lizzie hopes you enjoy the show!



## **Abi Samuel** - Monteen

This is Abi's second show with ELODS and she has loved every minute, from being a Hot Box Girl in *Guys and Dolls* to a factory girl in *Parade*.

# CAST



## **Sescia Grelet - Angela**

Sescia Grelet comes from a streetdancing background and has been in a number of popular music videos. She is also an experienced backing singer and keen actress. This is her Musical Theatre debut.



## **Alison Hall - Mrs Sally Slaton**

Alison has been a member of Elods since 2004. Previous roles include Miss Hannigan in *Annie*, Mrs Sowerberry in *Oliver!*, Mabel in *The Pyjama Game* and Mrs Woods in *Legally Blonde*. She is thrilled to be working with Simon Knight again, and to be part of such an emotive and powerful piece of theatre.



## **Richard Hutchinson - Officer Starnes**

This is Richard's fourth show with ELODS- he was last seen playing Harry the Horse in *Guys and Dolls*. He enjoys being part of such a great company and hopes you enjoy the show.



## **Mark Tobin - Officer Ivey**

Mark is performing in his 3rd show with ELODS and is pleased to be able to add Policeman to his previous occupations of Cowboy and Gambler. He is now hoping to be able to secure a Native American role for his next show to create his own (slightly odd) version of the Village People!

# ENSEMBLE



Paul Carpenter



Stef Carpenter



Debby Connor



Mar Copues-Out



Fiona Corden



Naomi Delamore



David Dowse



Les Gershman



Mark Harris

# ENSEMBLE



Phil Jackson



Emily Kennedy-Neal



Gregor Lusty



Carly McHugh



Carolyn Sobers



John Stivey



Clare Viccars



David Watts



Helen Wikeley

# ELODS WOULD LIKE TO THANK...

Flying equipment provided courtesy of Blue Chilli Flying Ltd.

Special thanks to Costume Store, Potters Bar, and Southgate Opera for the loan of costumes, and to Green Room Productions, Potters Bar Theatre Company and Queenswood School for the loan of staging.

We are extremely grateful to Frank Bundle, Nic Corden and all our volunteers for set construction. Many thanks to David Dowse and Lesley Clay for ingenious and resourceful prop making, Martin Brannigan for photography, Fiona Corden, Sarah Henderson, and Mark Shaw for jobs too numerous to mention, Michelle Shaw for organising Front of House, Julia Harris and Eleanor Glazer for helping with wardrobe.

The Director would particularly like to thank the cast for sourcing all the chairs used in the production!

We would also like to thank the members of the orchestra, all the technical team and the backstage crew, the first-aiders at the Wylllyotts Theatre, the front of house volunteers, all our advertisers, "Friends" of ELODS, and all the "unsung heroes" without whom the show would never happen, and our ever-patient families.



# ELODS PAST PRODUCTIONS

1953	Trial by Jury	1987	Finian's Rainbow, Cabaret
1954	HMS Pinafore	1988	Godspell,
1955	The Gondoliers		Goldilocks and the Three Bears
1956	Iolanthe & Patience	1989	The Pirates of Penzance, Chicago
1957	The Mikado	1990	The Pajama Game,
1958	Yeoman of the Guard		Little Mary Sunshine
1959	Trial By Jury	1991	The Good Companions, Princess L
1960	The Pirates of Penzance	1992	Half a Sixpence, Guys and Dolls
1961	The Gondoliers, The Gypsy Baron	1993	Kiss Me Kate, The Wizard of Oz
1962	Iolanthe	1994	Fiddler on the Roof, The Mikado
1963	HMS Pinafore	1995	42nd Street, Anything Goes
1964	Brigadoon	1996	Billy, Annie
1965	The Mikado	1997	Sweet Charity, High Society
1966	La Belle Helene, Trial By Jury	1998	My Fair Lady, Godspell
1967	Ruddigore	1999	Crazy for You, Me and My Girl
1968	Lilac Time, Music Hall	2000	How to Succeed in Business Witho
1969	Yeoman of the Guard		Really Trying, Oklahoma!
1970	Merrie England, Me and My Girl	2001	Hello, Dolly,
1971	Orpheus in the Underworld,		The Best Little Whorehouse in Tex
	G&S Concert, Music Hall	2002	Sugar, Fiddler on the Roof
1972	Brigadoon, The Boyfriend,	2003	The Boardwalk Gondoliers,
	G&S Concert		South Pacific
1973	Oklahoma!, The Mikado	2004	Cabaret, Calamity Jane
1974	The Pajama Game, Salad Days	2005	The Pirates of Penzance
1975	Fiddler on the Roof, How to Succeed	2006	High Society, Carousel
	in Business Without Really Trying	2007	Oliver!, Hot Mikado
1976	Iolanthe, Music Hall	2008	Annie, Singin' in the Rain
1977	Flappers and Flannels,	2009	The Wizard of Oz, Iolanthe
	Maid of the Mountain	2010	The Pajama Game, Kiss Me Kate
1978	Oh! What a Lovely War,	2011	Thoroughly Modern Millie,
	Orpheus in the Underworld		Jesus Christ Superstar
1979	Free and Air, The Arcadians	2012	42nd Street, Oklahoma!
1980	Music Hall, Cabaret	2013	How to Succeed in Business Witho
1981	Carousel, Call Me Madam		Really Trying, Whistle Down the Win
1982	Sweet Charity, The Card	2014	Acorn Antiques: The Musical,
1983	Memories, The Gondoliers		Lend Me a Tenor
1984	States Alive, Fiddler on the Roof	2015	South Pacific, Fiddler on the Ro
1985	The Sorcerer, Oklahoma!	2016	Legally Blonde, Guys and Dolls
1986	The Mikado, Oh! What a Lovely War	2017	Crazy for You

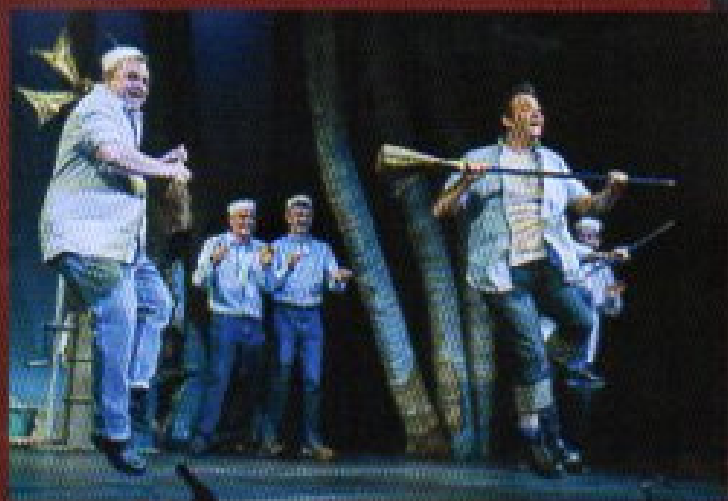
# ELODS PAST PRODUCTIONS



Fiddler on the Roof



Lend Me a Tenor

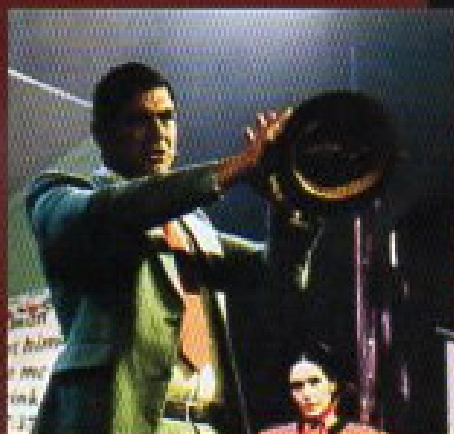


South Pacific



Crazy for You

Acorn Antiques

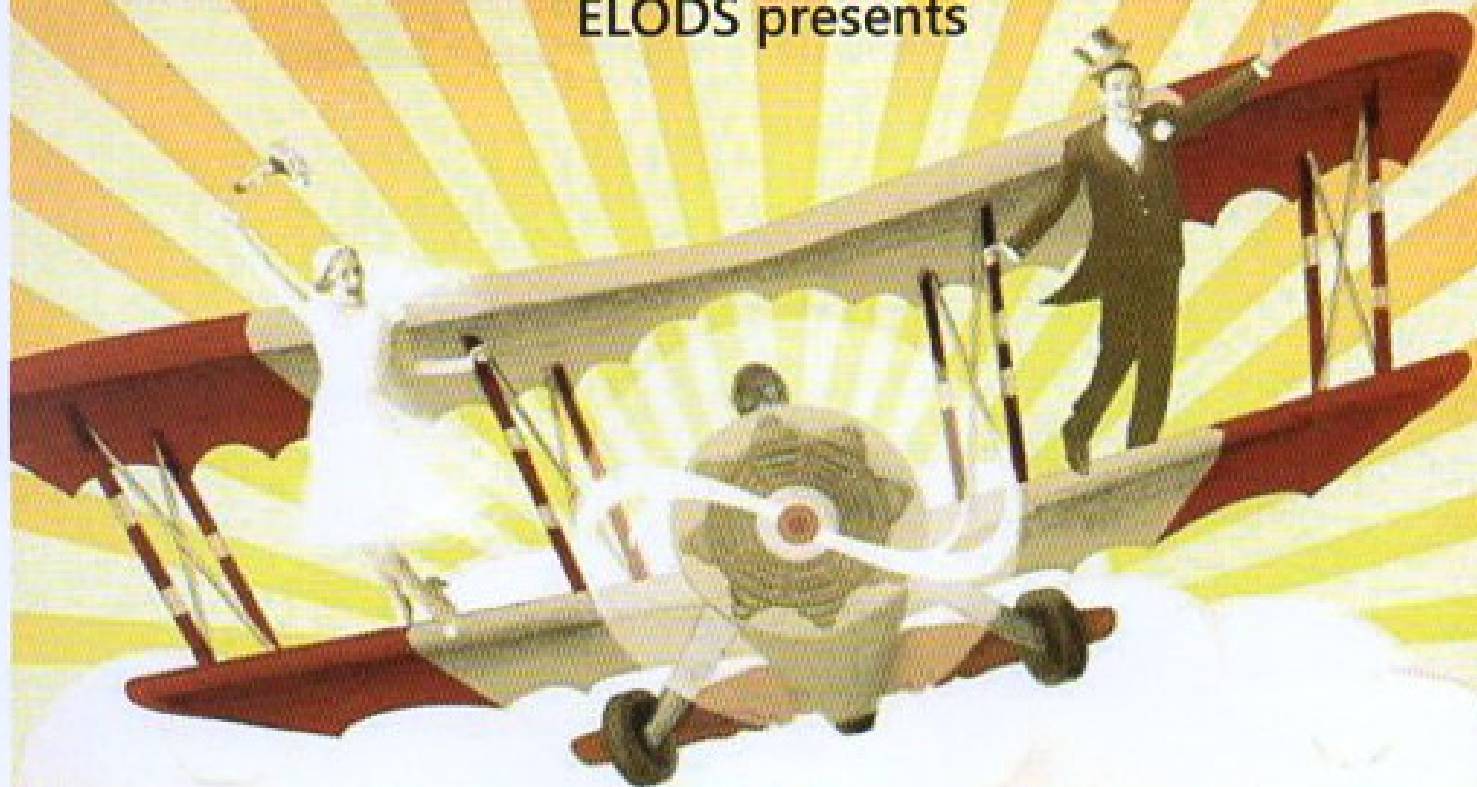


Guys and Dolls

Legally Blonde



ELODS presents



# THE DROWSY CHAPERONE

MUSIC & LYRICS BY  
Lisa Lambert & Greg Morrison

BOOK BY  
Bob Martin & Don Kellar



24 - 28 April '18

Wyllyotts Theatre

01707 645005

Original Broadway production of The Drowsy Chaperone  
produced by Kevin McCullum, Roy Miller, Bob Boyett, Stephanie  
McClelland, Barbara Freitag and Jill Furman

[www.wyllyottstheatre.co.uk](http://www.wyllyottstheatre.co.uk)