

"So In Love"

**ELODS presents
Cole Porter's**

Kiss Me, Kate

"Wonderbar"

"Too Darn Hot"

*"Another Op'nin'
Another Show"*

"Brush Up Your Shakespeare"

Kiss Me Kate: Music and Lyrics by Cole Porter. Book by Bella and Samuel Spewack. By arrangement with MusicScope Ltd.


Tues 19 Oct - Sat 23 Oct 2010

**The Wyllyotts Theatre
Potters Bar**



www.elods.org.uk

Meta**switch**

Formerly Data Connection  Networks

is delighted to be supporting

ELODS production of

Kiss Me Kate

Metaswitch is a world leading provider of the voice telephony and data switching technology which drive the modern communications networks from which we all benefit.

'Partners in the Enfield Community'

Metaswitch Networks
100 Church Street,
Enfield, EN2 6BQ

visit us @ www.metaswitch.com



Enfield Light Operatic and Dramatic Society

Hon. Vice-Presidents
Mike Gilbert, Sally Pearson

Treasurer
Frank Bundle

Social
Sunny Carter

Committee Officers
Chairman
Mark Shaw

Publicity
Nic Corden

General
David Dowse
John Lynch
Naomi Delamore
Mark Bilsby

Secretary
Fiona Corden

Membership
Stella Kitanos

Message from the Chairman

So get ready to 'Brush Up Your Shakespeare' and sit back for 'Another Op'nin' Another Show! I am pleased to welcome you to our autumn 2010 production: *Kiss Me Kate*.

I am proud to welcome nine new faces to ELODS since the last show - five of whom are men - a rarity in Am Dram !

Enfield Light Operatic & Dramatic Society are a special musical theatre group. We have a heritage stretching back to our first show, *Trial By Jury* in 1953. Back then the society usually put on one show a year, a G & S production. Our first musical, in the modern sense was in 1970 - *Me and My Girl* - and we haven't looked back. The only other time we have put on *Kiss Me Kate*, was in 1993 and a number of the current cast were involved.

Now, with nearly 70 members and ages ranging from 16 to ... well over retirement age, ELODS is an inclusive society for anyone who can sing and act. We also have an expanding troupe of dancers - my two left feet excluded! But ELODS is so much more. We hold social and fundraising events and have loyal front of house and back stage teams. Many members have formed life long friendships through the society while others have found life long partners.

Looking forward, we have a very exciting 2011 to look forward to with two shows that ELODS have never performed before. In the spring, our production will be *Thoroughly Modern Millie*, while for the autumn, we are really excited to have secured the rights to perform Andrew Lloyd Webber's *Jesus Christ Superstar!*

For loads more information on the society generally, have a look at our web site www.elods.org.uk or please email me on markshaw@blueyonder.co.uk if you want to get involved in any way.


I hope you enjoy the show.

Mark H Shaw
October 2010



Bang On The Door Ltd
wish ELODS great
success in their
production of
'Kiss Me Kate'



 bang on the door ©

ELODS needs you!!

Look what we have to work with
at the moment!

We welcome and are always seeking new members and helpers. Whether your ambitions are to play leading parts, sing in the chorus or help out with costumes, set, front of house or backstage, we'd love to welcome you to our friendly company.

You'll find very few egos at ELODS, we are a happy family and love working together to put on a good show!

We rehearse Tuesdays and Fridays in
Winchmore Hill.

www.elods.org.uk



"I dropped 6 dress sizes in 6 months!"

Ready to lose weight fast?

You're ready for LighterLife!

LighterLife is a weight-loss programme with a difference. In fact, we've been helping people to lose weight for over 12 years.

At LighterLife you work in small groups with people just like you, to change the way you think about food. So why not find out more at lighterlife.com.

How it works:

- Fast weight loss using soups, shakes and bars
- Then we help you get back to enjoying normal food
- FREE ongoing support so you can keep the weight off

Heather Newham

Enfield & Waltham Abbey

020 8366 4443

www.lighterlife.com/heathernewham



Now available
if you're
1 stone or more
overweight*

*BMI of 25 or above


LighterLife
Life in balance

History

Kiss Me, Kate is a musical with music and lyrics by Cole Porter. It is structured as a play within a play, where the interior play is a musical version of William Shakespeare's *The Taming of the Shrew*. The original production starred Alfred Drake, Patricia Morison, Lisa Kirk and Harold Lang.

Kiss Me, Kate was a comeback and a personal triumph for Cole Porter. After several successful musicals in the 1920s and 1930s, notably *Gay Divorce*, *Fifty Million Frenchmen*, and *Anything Goes*, he experienced an equestrian accident in 1937 that left him in constant pain.

Following the accident, he continued to write songs and musicals but with limited success, and some thought he was past his prime. *Kiss Me, Kate* was a response to Rodgers and Hammerstein's *Oklahoma!* and other integrated musicals, and it proved to be his biggest hit and the only one of his shows to run for more than 1,000 performances on Broadway. It won the first Tony Award presented for Best Musical, in 1949.

Interesting facts: In homage to Noel Coward, Fred quotes (in part) a famous comic line from the playwright's 1930s play *Private Lives* saying "Women should be struck regularly like gongs."

Porter wondered if Clark Gable would object to his name being used in the song *Always True to You (in My Fashion)*: "Mister Gable, I mean Clark...". But Gable was delighted upon hearing the song, along with his name being mentioned in the lyric.

Become a Friend of ELODS

for only £5 per annum and receive the following benefits:

- £1 off every ticket purchased
- Regular email updates
- Invitations to ELODS social events.
- Priority booking

For further information please email Naomi on teaandmarmiteontoasst@hotmail.com
or telephone 07988 117405



Synopsis

Act I

Egotistical Fred Graham is the director of a Broadway-bound musical version of William Shakespeare's *The Taming of the Shrew*. He and his diva movie-star ex-wife Lilli Vanessi star opposite each other in the roles of Petruchio and Katharine with fierce words both on-stage and off. Meanwhile, Fred's new love interest, Lois Lane, who plays Bianca, is romantically interested in Bill Calhoun, the actor playing Lucentio. Bill loves to gamble, and it turns out that he has signed Fred's name to a big IOU [for \$10,000 from a game of craps]. Also, flowers sent by Fred to Lois are mistakenly delivered to Lilli, and Lilli realizes that she may still be in love with Fred.

At the same time, a pair of gangsters have come after Fred to collect the gambling debt to which his name has been signed.

Everyone is in the middle of performing *The Taming of the Shrew* on stage when Lilli discovers that Fred's flowers were really intended for Lois, and she starts an all-out war mid-performance that threatens the production's success. Lilli channels her anger into a fierce performance as Katharine where her "stage slaps" quite often hit their mark with a little too much force, all to Fred's horror which turns to anger as he loses his temper and gives her the hiding of her life right on stage for all the cast and audience to witness.

Act II

Lilli, blind with rage and humiliation, contacts her influential fiancé (and right-hand man to the President of the United States) General Harrison Howell, demanding that he rescue her from Fred's foul clutches and is adamant she is quitting the show and will not set foot on the stage again.

Only a successful show will provide the money that Fred needs to avoid getting his fingers broken. Fred slyly uses the gangsters to prevent the furious Lilli from walking out on the show. The gangsters join the cast to keep an eye on Lilli and make sure she does not leave the theatre.

After intermission, "The Shrew" progresses as Petruchio marries Katharine and soon misses the single life. The gangsters find out that their boss has been killed, and so the IOU is worthless, and they leave, noting that guys who know Shakespeare can impress the ladies. Since the gangsters are no longer making her stay, Lilli quits the show, walking out with her fiancé Harrison, but not before Harrison expresses his general agreement with the sentiment of "The Shrew": that men ought to rule over their wives with a firm hand. This conversation causes Lilli visible consternation about being with the General and starts to question whether she has made the right choice.

As "The Shrew" comes to a close, Lilli unexpectedly returns to the stage, and speaking as Katharine, she admits her love for Fred. Lilli and Fred are reunited, Lois and Bill come together, and all ends happily.



Musical Synopsis – Act One

1. **Another Op'nin', Another Show** (Hattie and Company)
2. **Why Can't You Behave?** (Lois, Bill)
3. **Wunderbar** (Fred, Lilli)
4. **So In Love** (Lilli)
5. **We Open In Venice** (Fred, Lilli, Lois, Bill)
6. **Tom, Dick or Harry** (Bianca, Lucentio, Gremio, Hortensio)
7. **I've Come to Wive It Wealthily in Padua** (Fred and The Men)
8. **I Hate Men** (Lilli)
9. **Were Thine That Special Face** (Fred)
10. **Cantiamo D'Amore** (Company)
11. **Kiss Me, Kate** (Fred, Lilli and Company)



Musical Synopsis – Act Two

1. **Too Darn Hot** (Paul and Company)
2. **Where Is the Life That Late I Led?** (Fred)
3. **Always True To You In My Fashion** (Lois)
4. **From This Moment On** (General Howell and Lilli (Broadway revival))
5. **Bianca** (Bill and Company)
6. **So In Love (Reprise)** (Fred)
7. **Brush Up Your Shakespeare** (First Gangster, Second Gangster)
8. **Pavane** (Company)
9. **Were Thine That Special Face** (Fred)
10. **I Am Ashamed That Women Are So Simple** (Lilli)
11. **Kiss Me, Kate (Finale)** (Company)



Production Team – The Directors



Julia Rufey - Director

Julia Rufey trained at the Guildhall School of Music & Drama after which she went on to work in TV, Repertory, on tour and in the West End. Performing credits include *Sheila* in *A Chorus Line*, *Sally* in *Follies*, *The Bakers Wife* in *Into the Woods*, *The Wife* in *Putting it Together*, *Grace Farrell* in *Annie*, *Reno Sweeny* in *Anything Goes* and *Lilli Vanessi* in *Kiss Me Kate*. Musical directing credits include *Oklahoma!*, *Crazy for You*, *South Pacific*, *Carousel*, *Song & Dance*, *Broadway Pirates*, *Annie*, *Anything Goes!*, *The Mikado*, *Iolanthe*, *The King & I*, and the award-winning production of *Yeoman of the Guard* at the Buxton International Festival. Julia has also directed numerous straight plays and is currently on tour with the comedy sketch show, *Mutton*.



Mark Newport - Musical Director

Mark is currently working on *Les Miserables*, for which he has conducted performances in both London's West End and on the UK tour. Other West End credits include *Woman In White*, *Sunset Boulevard*, *Phantom of the Opera*, *Starlight Express*, *Martin Guerre*, *Bombay Dreams*, *Chicago*, and *The Goodbye Girl*. As Musical Director he has performed at Sadler's Wells, The Mermaid (Royal Gala), Whitehall and Bloomsbury theatres. He was also Assistant Conductor for Opera East on six national tours. Mark has taught at Guildford School of Acting, Mountview and Guildhall and is currently a member of staff at Westminster Kingsway College. *Kiss Me Kate* is Mark's 49th show with ELODS!



Chris Cuming – Choreographer

Chris is currently training in Directing/Performance Arts at Central School of Speech & Drama. Chris has been directing and choreographing shows including *The Winter's Tale* Central, *The Music Man* Cassio OS, *The Full Monty* Overtures, *Billy and Mame* for Green Room, *Sweeney Todd*, *I Love You Because* and *tick, tick... BOOM* with his own company MProductions. Chris is currently working on *La Cage Aux Folles* with Green Room and *Our House* at the Watford Palace Theatre



Greta Jenkins – Production Secretary

Greta has been involved with different aspects of the theatre for many years. In addition to working professionally in production and management, she has also played numerous roles for ELODS, including mad ghosts, mad sirens, mad aunts and mad grannies. She firmly denies any type casting.

Cast of Characters (in order of appearance)

Fred Graham (Petruccio) **Marc Howden Smith**

Lilli Vanessi (Katharine) **Natalie O' Sullivan**

Bill Calhoun (Lucentio) **Nic Corden**

Lois Lane (Bianca) **Savella Kitanos**

Harry Trevor (Baptista) **David Dowse**

Hattie **Sunny Carter**

Paul **David Adams**

Harrison Howell **Howard Wright**

First Man (Gangster) **Richard Bodek**

Second Man (Gangster) **Martin Isbister**

Wardrobe Assistant **Helen White**

Gremio **Mike Daws**

Hortensio **Richard Stoughton**

Ralph **Mark Shaw**

Stage Hand **Les Gershman**

Stage Hand 2 **Gregor Lusty**

Pops **Phil Morris**

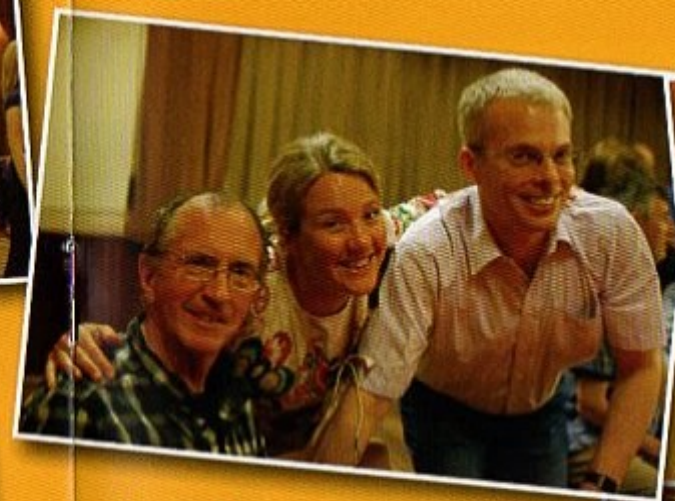
Company

Bob Jones, Fiona Corden, Hannah Thorne, Jude Stoughton,

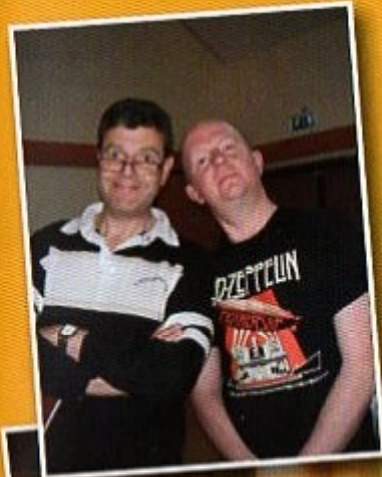
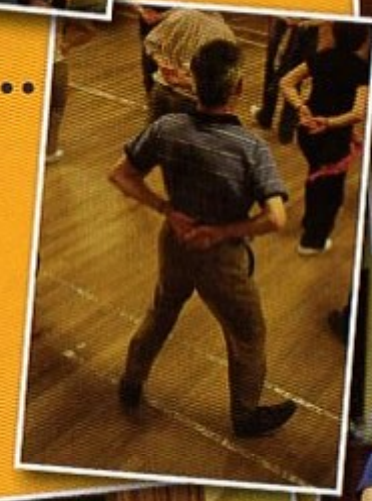
Judy Prior, Julia Harris, Lucy Pritchard, Naomi Delamore,

Stephanie Wench, Sue Pritchard, Ray Schone





Rehearsals...



Cast



Marc Howden Smith *Fred Graham (Petruccio)*

This is Marc's 24th year in amateur theatre. Previous roles include *Pirate King* in *Pirates*, *Curly* and *Judd Fry* in *Oklahoma*, *Audrey 2* (the plant) in *Little Shop of Horrors* and *Anatoly* in *Chess*. Marc spent 3 years at East 15 drama school and after that did various pantos, TV work and summer seasons, including *Black and White Minstrels* at Bognor Regis. He was also 3rd spear carrier from the left in a production of *Moses in Egypt* at Covent Garden.



Natalie O'Sullivan *Lilli Vanessi (Kate)*

This is Natalie's fourth year with ELODS and her first major leading role with the society. Previous roles with other companies and societies have included *Ado Annie* in *Oklahoma*, *Nellie Forbush* in *South Pacific*, *Pitti Sing* in *Hot Mikado* and *Turandot* in the production of the same name. She is thrilled to be playing the part of *Lilli Vanessi* as she is finally able to bring to light her "inner diva", although her husband says it all comes rather too naturally!



Savella Kitanos *Lois Lane (Bianca)*

This is Savella's first principal role with ELODS and she is so excited to be playing *Lois* (Bianca) at the age of 16. Since joining ELODS she has performed in 6 musicals, and is now at college studying Performing Arts. Savella would like to thank Julia Rufey and everyone at ELODS for all their kindness and support.



Nic Corden *Bill Calhoun (Lucentio)*

It's been a busy year for Nic in the theatre; first playing *Samuel* in *The Pirates of Penzance*, then *Dave* in *The Full Monty*, *Vernon Hines* in *The Pajama Game*, a brief cameo as *Cowboy Bob* in *Footloose*, and finally some 'proper acting' as *Hector* in *The History Boys*. He thought he could relax with the part of *Lucentio* and *Bill* but alas the choreographer had other ideas.



Richard Bodek *First Man (Gangster)*

Richard is delighted to be playing 1st man – a promotion from 2nd man in ELODS' last production of this show. Is this based on greater acting experience or bribing the director? He will let you judge. Richard has enjoyed rehearsing this great fun show with this lovely society - he met his lovely wife Sue through ELODS nearly 20 plus years ago. Enjoy the show!

Cast



Martin Isbister *Second Man (Gangster)*

This is Martin's third show with ELODS, previous ones being *Singin in the Rain* and *The Wizard of Oz*. Martin had a busy year last year with the birth of his beautiful daughter Annabelle Rose, and has been brushing up his Shakespeare while brushing up on nappy changing. Enjoy the show!



Howard Wright *Harrison Howell*

Howard joined ELODS way back in 1977. Favourite roles for ELODS and other local groups include *Billy Flynn* in *Chicago*, *Judd Fry* in *Oklahoma!*, *Judge Turpin* in *Sweeney Todd*, *Pirate King* in *Pirates of Penzance* and the *Governor* in *The Best Little Whorehouse in Texas*. Howard would like to thank his wife Gill for her unfailing support. Enjoy the show!



Sunny Carter *Hattie*

Sunny is delighted to be playing sensible *Hattie* after being typecast as brainless in previous ELODS' productions of *The Wizard of Oz* and *The Pajama Game*. She also likes hats a great deal. Sunny has made great friends at ELODS, and loves them all to bits. As a lifelong Alto, she apologises for the high A in advance.



David Dowse *Harry Trevor (Baptista)*

Dave is delighted to be playing the old pro *Harry* and wily *Baptista*. He has been with quite a few other amateur dramatic groups, before settling in with ELODS – his second family! Enjoy the show.



Mike Daws *Gremio*

Before X-Factor and colour TV, Mike discovered the joys of theatre by being the magic pumpkin in *Cinderella*. He couldn't resist the chance to join ELODS for *Kiss Me Kate*, as he got the chance to wear tights again.



Richard Stoughton *Hortensio*

Richard has played many principle roles including with the RSC at The Barbican. Amongst his favourite roles are *Bill Snibson* (*Me & My Girl*) and *Riff* (*West Side Story*). Rich is delighted to appear for the second time with ELODS in *Kiss Me Kate* alongside lovely wife Jude. He thanks his fantastic kids Maddie and Thomas for putting up with us being away rehearsing.

9th - 13th November 2010

Evening performances 7.45pm, Sat Matinee 3pm



Tickets £12 Tues - Thurs & Sat Matinee
£13 Fri & Sat Evening Performance
Concessions £10

Concessions available
Tues, Weds &
Saturday matinee
for senior citizens,
children under 16 & group
bookings of 10 or more.



INTIMATE THEATRE
PALMERS GREEN

An amateur production by arrangement with Joseph Weinberger.

Ticket Line: 020 8482 6923

Email: tickets@ffbos.com www.ticketsource.co.uk/ffbos



Production Team

The Production Team

Director – Julia Rufey
Musical Director – Mark Newport
Choreographer – Chris Cuming
Production Secretary – Greta Jenkins
Stage Manager – Frank Bundle
Lighting – Steve Bates
Set – Frank Bundle, John Lynch
Wardrobe – Hilary Thorne
Properties – Eleanor Glazer
Future Shows Co-ordinator – Alison Hall
Photos – Mark Bilsby, Stephen Archer
Poster Design, Advertising – Sunny Carter
Ticket Secretaries – Frank & Wendy Bundle
Mailing List – Sally Pearson
Front of House – Michelle Shaw
Programme – Sunny Carter, Stewart Leather and Samantha Stringle

The Kiss Me Kate Band

Reed 1 – Jessica Lowe
Reed 2 – Rachel Davis
Reed 3 – Mark Hayes
Reed 4 – Claire Frost
Trumpet 1 – Sam Lewis
Trumpet 2 – Adam Farrant
Horn – Andy Turner
Trombone – Matt Quick
Bass – Mike Taylor
Percussion – Mike Clowes
MD/Piano – Mark Newport

For Wylyotts Theatre

General Manager – Ginny Williams
Operations Manager – Christopher Edwards
Marketing Manager – Debbie Wiltshire
Front of House Manager – Jessica Blickwedel
Food & Beverages Manager – Angela Taylor



Frank Bundle, Stage Manager



Hilary Thorne, Wardrobe and Eleanor Glazer, Properties

POTTERS BAR
THEATRE COMPANY

Outside Edge

by Richard Harris

26th to 30th
October 2010
at 7.45pm
plus Saturday Matinee
at 2.45pm

at The Tilbury Hall
Darke Lane
Potters Bar

Box Office : 07985 542 204

or credit card sales online via :

www.pottersbartheatrecompany.co.uk

Potters Bar Theatre Company
proudly presents ...
at enormous expense

LET'S ALL GO TO THE MUSIC HALL

For an evening of fun and frivolity



23rd-27th Nov 2010 7:30pm

(Saturday Matinee 2:45pm)
At The Wylyotts Theatre
Potters Bar

Tickets available

Box office: 07985 542204

or online at: www.pottersbartheatrecompany.co.uk

Devised and Directed by David Macklin

Choreographed by Rosemary Macklin

Musical Direction by Maistre Roy Mathers

WYLYOTTS
THEATRE

ELODS would like to thank the following people: the members of the orchestra, all the technical team and backstage crew, the first-aiders at the Wylyotts Theatre, the front of house volunteers, all our advertisers, Metaswitch Networks, 'Friends' of ELODS and our patient families!





The Nightingale Community Hospice Trust

The Nightingale Community Hospice Trust was founded in the summer of 2002 as a charity to provide support, help and information to people living with cancer and their families living in the Borough of Enfield.

All the services are free to clients / carers and include:

Drop-ins on Wednesday and Friday afternoons from 1.30—4.30pm

Complementary therapies . Counselling . Carer's support

Home sitting / befriending service . Night Sitting . Bereavement Group

Lymphoedema Clinic . Advice and Information

For further information please contact Sally Ainsworth 020 8366 4333

The Nightingale Community Hospice Trust

The Lancaster Centre, 53 Lancaster Road, Enfield, EN2 0BU Registered Charity No. 1094435

**TAYLOR
DANCE
STUDIO**

Classes in Tap, Modern, Jazz,
Ballet and Streetdance
All ages

IDTA Exams

Junior Streetdance

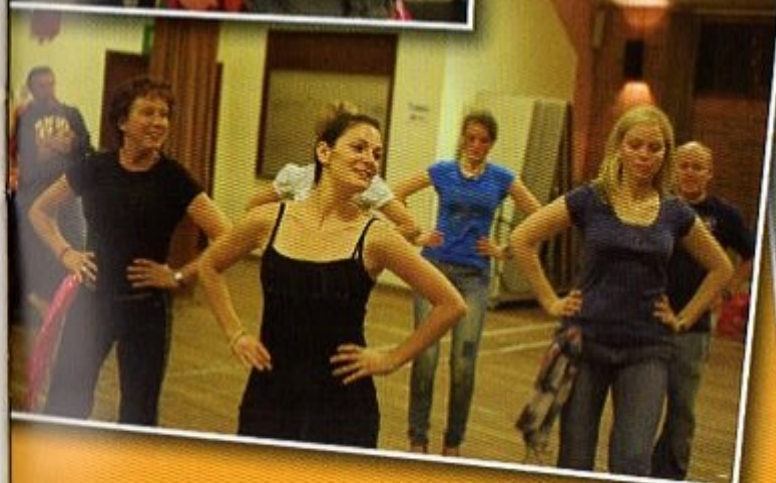
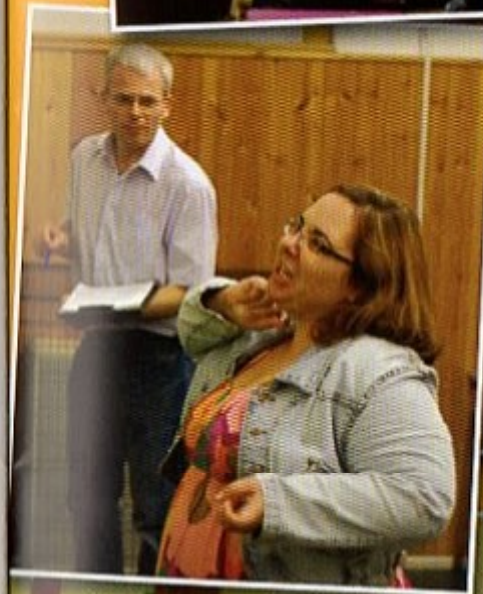
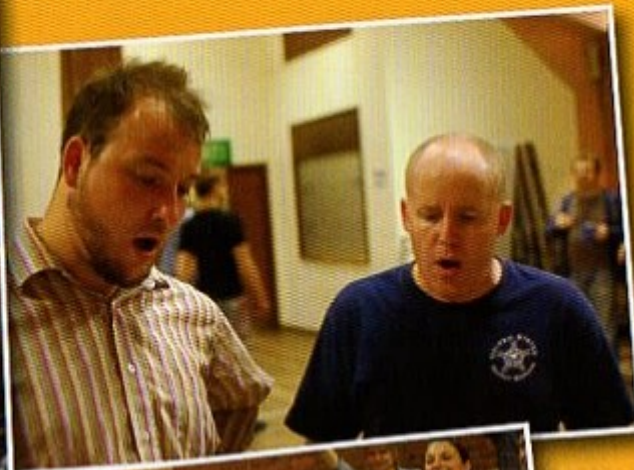
4 - 8 yrs
Wednesdays 5pm
at Highlands village hall
N21 1UJ

For details please call
Kim Protopapa
0208 363 4367



Ahem.
Did you know the
best travel deals in
town are at

SCOTT'S TRAVEL
3 Broadway, Southgate, London N14 6PJ
email: sales@scottstravel.co.uk
Give them a hoot to feather your nest!
020 8882 0141



 cineworld
CINEMAS

**Best Wishes
from
Jubilee Church**

Meeting at *cineworld*, Enfield
Sundays at 10am
All Welcome



jubilee church

it's all about Jesus

Dr. Adrian Thurrell



It is with great pleasure that Adrian Thurrell sponsors *Kiss Me Kate*, a musical dearly close to his tender heart.

The following people would like to wish ELODS every success with their production of

Kiss Me, Kate

Lexie Hall
Victoria Hall
Jessica Prior
Katie Prior
Emily Prior
Oli Carter
Rachel Williams

Andy Kitanos
Stella Kitanos
Nicole Kitanos
Heather Corden
Barrie Corden
Laura Midgley
Vikki Lock

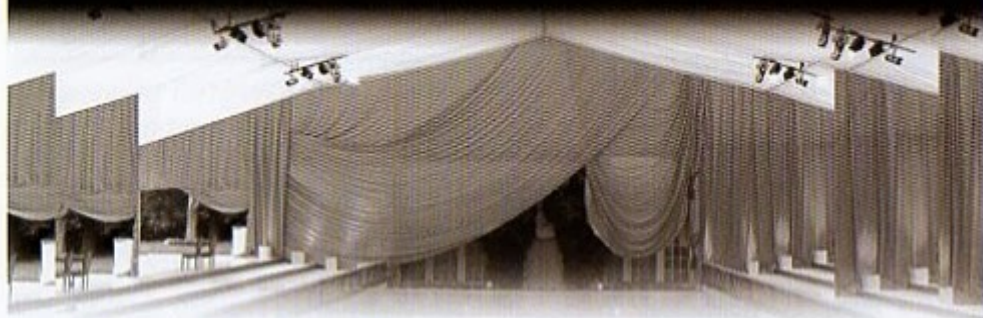
Pog & Cameron
Sue Bard Bodek
Ena Bard
Lore Bodek
Tara the Wonderdog
Ben Shaw
Katie Shaw

PGUK
Publishers Group UK

Publishers Group UK
(PGUK) would like
to wish ELODS every
success with their
production of
Kiss Me Kate.

Publishers Group UK (PGUK) is a market leader in book sales and distribution. We represent publishers from the UK, Europe and the USA. We offer a wonderful range of titles over a wide range of subjects.

The largest specialist supplier of drape, rigging and starcloth



the fabric and structure of your event



BLACKOUT

Paris

t +33 (0) 1 40 11 50 50
f +33 (0) 1 49 48 16 24
e info@blackout.fr

HIRE - INSTALLATION - SALE

London

t +44 (0) 20 8687 8400
f +44 (0) 20 8687 8500
e sales@blackout-ltd.com

www.blackout-ltd.com

ELODS past productions

- | | | | |
|------|---|------|--|
| 1953 | Trial by Jury | 1987 | Finians Rainbow & Cabaret |
| 1954 | HMS Pinafore | 1988 | Godspell & Goldilocks
The Three Bears |
| 1955 | The Gondoliers | 1989 | The Pirates of Penzance
Chicago |
| 1956 | Iolanthe & Patience | 1990 | The Pajama Game
Little Mary Sunshine |
| 1957 | The Mikado | 1991 | The Good Companions
Princess Ida |
| 1958 | Yeoman of the Guard | 1992 | Half A Sixpence
Guys and Dolls |
| 1959 | Trial by Jury | 1993 | Kiss Me Kate
The Wizard of Oz |
| 1960 | The Pirates of Penzance | 1994 | Fiddler On the Roof
The Mikado |
| 1961 | The Gondoliers
The Gypsy Baron | 1995 | 42nd Street Anything Goes |
| 1962 | Iolanthe | 1996 | Billy
Annie |
| 1963 | HMS Pinafore | 1997 | Sweet Charity
High Society |
| 1964 | Brigadoon | 1998 | My Fair Lady & Godspell |
| 1965 | The Mikado | 1999 | Crazy For You
Me and My Girl |
| 1966 | La Belle Helene
Trial by Jury | 2000 | How to Succeed in Business
Oklahoma! |
| 1967 | Ruddigore | 2001 | Hello, Dolly
The Best Little Whorehouse
in Texas |
| 1968 | Lilac Time
Music Hall | 2002 | Sugar
Fiddler on the Roof |
| 1969 | Yeoman of the Guard | 2003 | The Boardwalk Gondoliers
South Pacific |
| 1970 | Merrie England
Me and My Girl | 2004 | Cabaret
Calamity Jane |
| 1971 | Orpheus in the Underworld
G & S Concert & Music Hall | 2005 | The Pirates of Penzance |
| 1972 | Brigadoon & The Boyfriend
G & S Concert | 2006 | High Society
Carousel |
| 1973 | Oklahoma & The Mikado | 2007 | Oliver!
Hot Mikado |
| 1974 | The Pajama Game & Salad
Days | 2008 | Annie
Singin' in the Rain |
| 1975 | Fiddler on the Roof
How to Succeed in Business | 2009 | The Wizard of Oz
Iolanthe |
| 1976 | Iolanthe & Music Hall | 2010 | The Pajama Game
Kiss Me Kate |
| 1977 | Flappers and Flannels
Maid of the Mountain | | |
| 1978 | Oh! What a Lovely War
Orpheus In The Underworld | | |
| 1979 | Free As Air & The Arcadians | | |
| 1980 | Music Hall & Cabaret | | |
| 1981 | Carousel & Call Me Madam | | |
| 1982 | Sweet Charity & The Card | | |
| 1983 | Memories & The Gondoliers | | |
| 1984 | States Alive
Fiddler On The Roof | | |
| 1985 | The Sorcerer
Oklahoma ! | | |
| 1986 | The Mikado
Oh! What A Lovely War | | |



ELODS presents

THOROUGHLY MODERN MILLIE

"Come see our next show!"

"JIMMY"

"FORGET ABOUT THE BOY"

"GIMME GIMME"

The amateur production is presented by arrangement with JOSEF WENBERGER LTD on behalf of MUSIC INTERNATIONAL of NEW YORK.

TUES 22 MAR - SAT 26 MAR 2011

THE WULLYOTTS THEATRE
POTTERS BAR

TICKETS: 07720 671140
www.elods.org.uk

ELODS PRESENTS

An amateur production by arrangement with The Really Useful Group

JESUS CHRIST SUPERSTAR

MUSIC BY ANDREW LLOYD WEBBER
LYRICS BY TIM RICE

TUES 18 OCT - SAT 22 OCT 2011

THE WULLYOTTS THEATRE

WWW.ELODS.ORG.UK