

ELODS presents



Book by THOMAS MEEHAN
Music by CHARLES STROUSE
Lyrics by MARTIN CHARNIN

Original production directed by Martin Charnin
Originally produced by Irwin Meyer, Steven R. Friedman,
Lewis Allen, Alvin Nederlander Associates Inc.,
The John F. Kennedy Center for Performing Arts, Icarus Productions.
Based on "Little Orphan Annie" (R) by permission of the Tribune Media Services Inc.

Tues 8th- Sat 12th April 2008

THE WYLLYOTTS CENTRE
Potters Bar

This amateur production is presented by arrangement with JOSEF WEINBERGER LTD.
on behalf of MUSIC THEATRE INTERNATIONAL of NEW YORK.

WWW.ELODS.ORG.UK



is delighted to support

“Warbuck’s Household Staff”

in Enfield Light Operatic & Dramatic Society’s
production of

Annie

Data Connection is a world leading software development company, providing key technologies to the major organisations in the computer industry.

‘Partners in the Enfield Community’

Data Connection
100 Church Street,
Enfield, EN2 6BQ

visit us @ www.dataconnection.com



The following people would like to wish ELODS every success with their production of Annie

Ena Bard	Doris Gershman	Ken Reeve
The Bears	Harry Gershman	The Retired Greyhound Trust
Lore Bodek	Raymond Gershman	Alison Savage
James Brown	Kim Harvey	Neil Savage
Joe Brown	Hazelwood Junior School	Ben Shaw
Paul Brown	Ann & Morris Lockwood	Katie Shaw
Tracey Brown	Claudia Lynch	Maureen Sinfield
Paul Cody	Tineke Out	Pete Somers
Heather & Barry Corden	Henk Out	CJ Somers
Mr & Mrs Cuthbert	Vikki Lock	Diane Stringle
Clifford Dickson	Joyce Pearson	Samantha Stringle
Jessie Dickson	Steve Povey	Katy Thorne
Sinead Egan	Sue Povey	Graham White
Sheila Fourmy	Charlotte Povey	
Ivor Fourmy	Renaisi Ltd	



Bang On The Door Ltd
wish ELODS
great success in
their production of
Annie

best
friends

bang on the door™ ©

Enfield Light Operatic and Dramatic Society

Hon. Vice-Presidents

Mike Gilbert, Sally Pearson

Committee Officers

Chair

Natalie Butler

Social Committee

Bob Jones, Laura Cody

Secretary

Roger Eames

Website

Phil Crocker

Treasurer

Frank Bundle

General

Mark Shaw, Caroline Cody

Publicity

Sandra Ashworth

Membership

Leslie Gershman

Would you like to become a 'Friend' of ELODS? You will receive many benefits including regular updates of society news and advance notification of our productions.

Would you like to hear about forthcoming shows by being on our mailing lists?

Would you like to be involved in any way in future productions? We are always looking for more performers – if you like what you see on stage, come and join us! Help is always needed back stage and front-of-house too.

For further details in relation to any of the above please visit our website or email Natalie Butler at natalie@theluxor.co.uk

www.elods.org.uk

email: postmaster@elods.org.uk



Message from the Madam (Madam Chair that is!)

Greetings friends and visitors and welcome to our Spring production of 2008, Annie! This production is rather momentous on two counts; firstly, this is my first production with ELODS as their newly appointed chairperson; and secondly, this production of Annie is being held in the year of Charles Strouse, composer of Annie's 80th birthday. We would like to dedicate our production to Mr Strouse too, in the words of Abba, "thank [him] for the music, the songs we're singing! Thanks for all the joy they're bringing!" Happy Birthday, Charles.

We have a birthday card at Front of House that we invite everyone to sign for a small donation. The card will then be sent to Charles Strouse in time for his 80th birthday celebrations. Proceeds from the donations will be given to The Nightingale Community Hospice Trust, a charity very close to all our hearts here at ELODS.

I have watched this production develop over the past few months under the expert direction of Julia Rufey and Mark Newport and I am sure Charles Strouse would enjoy it as much as I know you will.

There are always so many people to thank and only so much space on this page so let me start by mentioning the stars behind the scenes. To Frank Bundle, our master craftsman. One of the most talented stage managers I have ever worked with. Not only is he the genius behind the set but he is also a dedicated committee member, holding on to our purse strings in his position as treasurer. You give so much to this society Frank, from all of us, I thank you! To Hilary Thorne in Wardrobe and Eleanor Glazer in Properties for helping turn North Londoners in 21st century Hertfordshire into New Yorkers littering Broadway during the Great Depression. To Andy and Stella Kitanos for their commitment and professionalism organising the Front of House as well as all the other organisational tasks you have selflessly taken on board. To, Michelle Shaw for, yet again, taking on the huge responsibility of ticket distribution. Also, thanks to Wendy and the staff at Wylllyotts for always making us feel so welcome here in Potters Bar. To all those I was unable to mention but who are nonetheless worthy of praise, thank you all.

We hope to see you again for our Autumn production of *Singin' in the Rain*. If you wish to be part of this production be it on stage or behind the scenes then please feel free to come along to one of our rehearsals. Just speak to a member of the cast or visit our website www.elods.org.uk for more details.

Now, all that is left for me to say is thank you for joining us and I hope you enjoy the show!

Natalie Butler

Annie

Annie is based upon the popular Harold Gray comic strip Little Orphan Annie, with music by Charles Strouse, lyrics by Martin Charnin, and the book by Thomas Meehan. The musical ran for nearly six years on Broadway. There followed numerous productions in many countries, as well as national tours, and a Tony Award for Best Musical.

11 year old Annie is in an orphanage, run by Miss Hannigan, who keeps her charges in line by bullying and threatening them. The girls are ever hopeful that they will find parents and a new life while Miss Hannigan is unhappy with her situation. Annie runs away, determined to find her parents. She befriends a stray dog, Sandy, and meets a group of down-and-outs, made homeless because of the Great Depression. After she is returned to the orphanage, Grace Farrell, Warbucks's assistant, picks her to live in Oliver "Daddy" Warbucks's glamorous home for the Christmas holidays.

Although initially uncomfortable around each other, Annie and Daddy Warbucks soon warm to one another. Warbucks decides he would like to adopt her, but Annie insists that her parents will come for her. Over the radio, and with the help of President Roosevelt, Warbucks offers a reward for the parents. Miss Hannigan and her brother, Rooster, and his slightly dizzy girlfriend, Lily St. Regis, scheme to pretend to be the parents and collect the reward. They are found out and it is also revealed that Annie's parents have died. Warbucks adopts Annie.

Researched by Bob Jones

Cast of Characters

Annie **Fiorella Osborne**
(Tues, Thurs, Sat Mat)

Annie **Louisa Povey**
(Wed, Fri, Sat Night)

Molly **Katie Weddell**

Kate **Nicole Kitanos**

Tessie **Lydia Hammer**

Pepper **Eve Cook**

July **Tamara Amobi**

Duffy **Savella Kitanos**

Miss Hannigan **Alison Hall**

Grace Farrell **Sandra Ashworth**

Warbucks **Roger Rufey**

Rooster **Nic Corden**

Lily St Regis **Laura Cody**

President Roosevelt **Robert Jones**

Drake/Bert Healy **Richard Bodek**

Other Orphans

Rachel Bateman (*Molly*, Sat Mat)

Kate Brown (*Kate*, Sat Mat)

Katie Shaw (*Tessie*, Sat Mat)

Chloe Thornton (*Pepper*, Sat Mat)

Emily Hammer (*July* Sat Mat)

Hannah Ferry (*Duffy* Sat Mat)

Mrs Greer **Caroline Cody**

Mrs Pugh/Ronnie Boylan

Sally Pearson

Cecille **Julia Harris**

Annette **Helen White**

Bundles McCloskey **David Dowse**

Officer Ward/Jimmy Johnson

Mark H Shaw

Star To Be **Naomi Delamore**

Connie Boylan **Sunny Carter**

Bonnie Boylan **Marjolien Out**

Sandy The Dog **Max**

Other Characters and Company

Sue Bard Bodek, Fiona Cuthbert,

Roger Eames, Pamela Farrant,

Kamali Freedman' Brown, Leslie

Gershman, John Hillier, Olly

Lockwood, Leanne Lynch,

Diane Stringle, Joseph Weddell

Cast



Fiorella Osborne *Annie*

Fiorella is eleven years old, and attends Boden's Dance School. She has previously played the role of *Bashful* in the pantomime *Snow White*, and has made TV appearances for Nickelodeon TV, Eastenders and Holby City. Two years ago, Fiorella played an unnamed orphan in *Annie*, and is now thrilled to be playing the lead for ELODS.



Louisa Povey *Annie*

Louisa lives in Enfield and has been dancing since she was two. She is now eleven and is delighted to be playing the leading role of *Annie*. Louisa has performed with many fringe theatre companies and has appeared in previous productions including *Annie Get Your Gun*, *Blitz* and as *Kate* in *Annie*. Louisa attends the Suella School of Performing Arts and she is shortly to appear in the dance festival to be held at the Millfield Theatre."



Katie Weddell *Molly*

Katie is seven years old and this is her first production. Having watched her two brothers in several shows, she has always wanted to be on the stage, and is now delighted to be playing *Molly*. She sings in a church choir and attends local theatre classes. Katie enjoys art and swimming, and is a big Harry Potter fan.



Nicole Kitanos *Kate*

Nicole Kitanos is eight years old and is delighted to be playing a principle part as *Kate* one of the younger orphans in *Annie*. This is Nicole's first stage debut with ELODS and has been so excited since she got the part. She is particularly looking forward to holding up a mouse in front of *Miss Hanigan*. Nicole loves to sing, act and dance and has just finished a show with her ballet class Star Dance.



Lydia Hammer *Tessie*

This is Lydia's second appearance for ELODS having been part of the chorus in the 2006 production of *Carousel*. Annie has always been one of her favourite musicals and so she is delighted to be playing the part of *Tessie*. Lydia enjoys tap dancing, singing and playing piano and trumpet – but not all at the same time of course!



Eve Cook *Pepper*

Eve is ten years old and she has always loved drama. Her dream has always been to be on stage. Eve started ballet when she was five, progressing to tap and modern. Later she started acting classes at a drama school on a Saturday. She has taken part in a previous production of *Annie* at the Millfield Theatre which she thoroughly enjoyed.



Tamara Amobi *July*

Tamara is 11 years old and goes to Raglan Junior School. She has been interested in singing since she was 6 years old. Tamara is taking part in a dance festival and she also attends the school choir. Tamara is currently doing another talent show where she is singing to raise money for Great Ormond Street Hospital.



Savella Kitanos *Duffy*

Savella Kitanos is 13 years old and is delighted to be playing *Duffy* the eldest of all the orphans. This is her first principle role with Elods. She has been a member of Elods for 2 years and has grown with the society with shows including *Carousel*, *Oliver* and *Hot Mikado*. She has always loved singing dancing and acting and has also created her own dance group called Vision.



Alison Hall *Miss Hannigan*

Having played sweet maids for many years, Alison discovered her dark side last year when she portrayed *Mrs Sowerberry* in *Oliver!*. Once again she is relishing the chance to be beastly to small children. *Miss Hannigan* is a fantastic part and Alison is approaching it with an equal mix of terror and excitement. She dedicates her performance to her own 'little girls', Lexie and Victoria.



Sandra Ashworth *Grace Farrell*

Sandra is thrilled to be playing the role of Grace Farrell, private secretary to a billionaire, an astonishing promotion from fish seller in *Oliver!* This is her third show with ELODS, but her first as a principal. Previous favourite roles include *Hope Harcourt* in *Anything Goes* and *Princess Aurora* in the panto *Sleeping Beauty*.



Roger Rufey *Warbucks*

Roger was tempted to come out of a well earned and much demanded retirement as the part of Daddy Warbucks has so far eluded him. He would like to dedicate his performance to his wife, his children, his three cats and an attractive young lady he met on a business trip to Berlin, whose name he can't quite remember.



Laura Cody *Lily St Regis*

Laura is privileged to play the part of the ditsy blonde, 'Lily' - a part that most people say is quite 'apt!' Annie will be Laura's ninth show with ELODS. She is studying 'Media Make-up' and hopes for a career in special effects make-up in film and theatre. She recently came second in a make-up competition and is now in the National Finals of England, held in Blackpool.

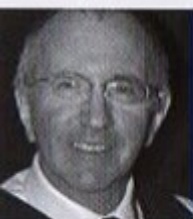


Nic Corden *Rooster*

Nic has been involved in musicals since his early teens at school in Devon. He made his debut with ELODS as *Nanki Poo* in their last production *The Hot Mikado*. Previous roles have included *Riff* in *West Side Story* and *Jud Fry* in *Oklahoma!*. He is delighted to be playing a bad guy again!

**Naomi Delamore** *Star to Be*

Naomi is over the moon to be playing *Star to Be* and secretly now very thankful to those who pushed her to audition. This is Naomi's third production with ELODS and her first solo singing role. That fact makes her thrilled, nervous and slightly giddy but most of all very excited. She sincerely hopes you enjoy the show as much as she has!

**Bob Jones** *President Roosevelt*

Following *High Society*, his first show, Bob played the part of *Mordca* in the Finchley production of *Fiddler on the Roof*. In *Oliver!* Bob was the kindly *Mr Brownlow* then along came *Hot Mikado* and he is still recovering from the back pain. In *Annie* the part of the *President* came his way and Bob is well pleased as there is very little dancing.

**Richard Bodek** *Drake/Bert Healy*

If you look hard you might not see the join! Another show comes round with ELODS, a society I'm pleased to have been part of for 20 years. This time around combining the roles of a manservant and an entertainer – just like being at home! We hope you enjoy the show – we will.

**Sally Pearson** *Ronnie Boylan/Mrs Pugh*

As a veteran of some 70 ELODS shows, Sally was disappointed that she was not allowed to audition for the role of *Annie* (or even an orphan!) and her black greyhound, *CJ*, was not invited to play *Sandy*! But trooper that she is, she was delighted to be asked to play the lovely *Ronnie Boylan* and sing with her equally lovely sisters, *Bonnie* and *Connie*.

**Marjolien Out** *Bonnie Boylan*

Marjolein was born and raised in the Netherlands and played her first role in England in ELODS last show *Hot Mikado*. Marjolein trained for one year at the AVLM singing academy in Lelystad. She was involved in the Dutch amateur productions of *Jesus Christ Superstar*, *Hair*, *Joseph* and the *Amazing Technicolour Dreamcoat*, *Starlight Express* and *Saucy Jack* and the *Space Vixens*. She says to everyone: *Veel plezier!!*

**Sunny Carter** *Connie Boylan*

Sunny is practising standing on stilts so she can look like a sister of *Bonnie Boylan* Mar. So far she has managed to stand on two upturned flower pots without breaking her neck and is wondering if anyone will notice if she paints them like shoes?

Best Wishes from Charles Strouse



To Friends and Performers of My Shows,

As I celebrate my 80th year, when I hear the first musical notes of the show, I still feel the same rush of excitement as I did opening night.

The enjoyment and satisfaction I receive from your performances of the musicals I've written bring me Life's great rewards.

All the "work" I have done wasn't work at all, knowing I've given some small measure of pleasure to you. Life is truly worthwhile.

With Much Appreciation,

Charles Strouse

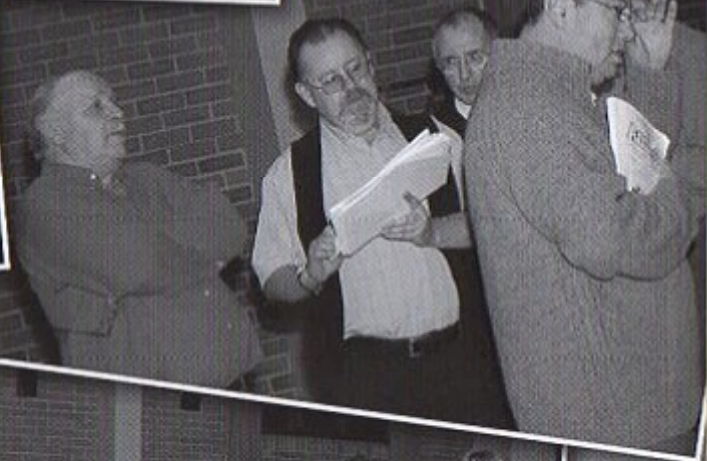
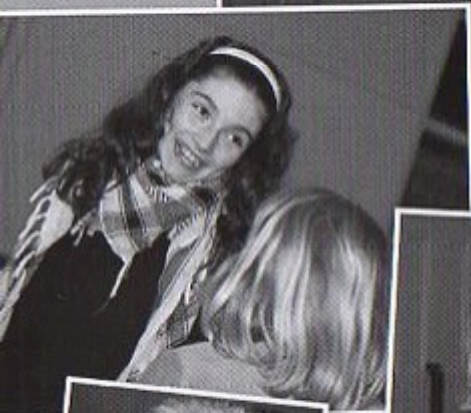
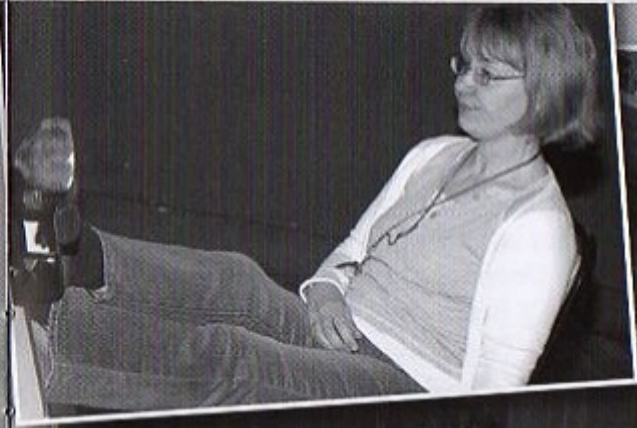
Charles Strouse • New York City, NY 10019

Musical Synopsis – Act One

1. Overture – Orchestra
2. Maybe – Annie
3. Annie's Escape – Orchestra
4. Hard Knock Life – Annie & Orphans
5. Hard Knock Life Reprise – Orphans
6. Tomorrow – Annie
7. Hooverville – Company
8. Hooverville Raid – Orchestra
9. Little Girls – Miss Hannigan
10. Little Girls Reprise – Miss Hannigan
11. I Think I'm Gonna Like It Here – Annie, Grace and Company
12. N.Y.C – Warbucks, Grace, Annie, Star-To-Be and Company
13. Easy Street – Rooster, Miss Hannigan, Lily
- 13a. Into Warbuck's Mansion – Orchestra
14. You Won't Be An Orphan For Long – Grace, Warbucks, Annie and Company

Musical Synopsis – Act Two

15. N.Y. Entr'acte – Orchestra
- 15a. Timpani Cue – Orchestra
16. Fully Dressed – Boylan Sisters, Bert Healy
17. Fully Dressed (children) – Orphans
18. Easy Street Reprise – Rooster, Lily, Miss Hannigan
19. Train Music – Orchestra
20. Cabinet Tomorrow – Annie, Cabinet, Roosevelt, Howe, Warbucks
21. Cabinet End – Roosevelt, Cabinet, Howe
22. Train Scene – Orchestra
23. Something Was Missing – Warbucks
24. I Don't Need Anything But You – Warbucks, Annie, Grace, Drake, Company
25. Party Music – Orchestra
26. Same Effect On Everyone – Annie
27. A New Deal For Christmas – Warbucks, Grace, Roosevelt, Annie, Orphans & Company



Rehearsals...



Production Team – The Directors



Julia Rufey - Director

Julia Rufey trained at the Guildhall School of Music & Drama after which she went on to work in TV, Repertory, on tour and in the West End. Performing credits include *Shelia* in *A Chorus Line*, *Sally* in *Follies*, *The Bakers Wife* in *Into The Woods*, *The Wife* in *Putting it Together*, *Grace Farrell* in *Annie*, *Widow Corney*

in *Oliver*, *Reno Sweeny* in *Anything Goes*; *Lily Vanessi* in *Kiss Me Kate*; *Henrietta* in *Robert and Elizabeth*, *Valencienne* in *The Merry Widow*, *Adelaide* in *Guys & Dolls*, *Maggie Jones* in *42nd Street* and *Cousin Nettie* in *Carousel*. Directing credits for straight plays include *The Norman Conquests* trilogy, *Hayfever*, *Blithe Spirit*, *The Importance of Being Ernest*, *Henry V*, and *A Midsummer Night's Dream*. Directing credits for musicals include *Oklahoma!*, *Crazy for You*, *South Pacific*, *Song & Dance*, *Drake*, *Broadway Pirates*, *Anything Goes!*, the first production of a brand new musical, *Fast Food*, and the award-winning production of *Yeoman of the Guard* at the Buxton International Festival. Julia can currently be seen touring the country in the comedy sketch show *Mutton*.



Mark Newport - Musical Director

Mark is currently The Associate Musical Director of *Les Miserables*, for which he has conducted performances in both London's West End and on the UK tour. Other West End credits include *Woman In White*,

Sunset Boulevard, *Phantom of the Opera*, *Starlight Express*, *Martin Guerre*, *Bombay Dreams*, *Chicago*, and *The Goodbye Girl*. As Musical Director he has performed at Sadler's Wells, The Mermaid (Royal Gala), Whitehall and Bloomsbury theatres. He was also Assistant Conductor for Opera East on six national tours. Mark is a member of the musical staff at the Guildford School of Acting and also Mountview. *Annie* will be Mark's 44th show for ELODS!

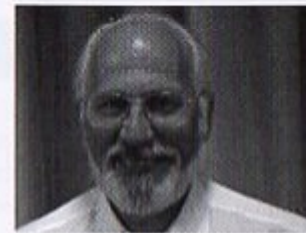
Production Team

The Production Team

Assistant to the Director –
Caroline Cody
Stage Manager – Frank Bundle
Lighting – Steve Bates
Sound – Tom Course
Set – Frank Bundle
Wardrobe – Hilary Thorne
Properties – Eleanor Glazer
Photos – Mark Bilsby, Bob Jones
Poster Design – Caroline Cody,
Christopher Cody
Ticket Secretary – Michelle Shaw
Mailing List – Helen White,
Sally Pearson
Front of House – Andy and Stella
Kitanos
Advertising – Sunny Carter
Publicity – Sandra Ashworth
Programme – Stewart Leather,
Samantha Stringle

For Wyllotts Theatre

General Manager
Ginny Williams
Operations Manager
Christopher Edwards
Technical Manager
Graham Cutting
Marketing Manager
Debbie Wiltshire
Customer Services Manager
Jackie Houslop



Frank Bundle, Stage
Manager



Eleanor Glazer, *Properties* and Hilary
Thorne, *Wardrobe*

ELODS would like to thank the following people: the members of the orchestra, all the technical team and backstage crew, the chaperones, the first aiders at the Wyllotts Theatre, Andy and Stella Kitanos, the front of house volunteers, all our advertisers, Data Connection and Queenswood School for their generous sponsorship, and the 'Friends' of ELODS.



Joan Ryan

Labour MP for Enfield North

Our own local MP, Rt. Hon. Joan Ryan, wishes "all the best to the politicians and cabinet members in ELODS production of Annie".

Here's to bringing more sun to our local community.



Clearglaze

no salesmen, no showrooms
just good quality materials, fabrication and fitting

MANUFACTURED LOCALLY AT OUR OWN FACTORY • INSURANCE BACKED 10 YEAR GUARANTEE

- Free Estimates
- Fast Turnaround
- Pilkington K glass as standard
- Service Calls
- Misted Units
- Special Offers
- Windows and Doors
- Conservatories
- Porches
- Box Sash Windows
- Leaded Lights
- Hardware and Locks

FENSA

registered

020 8805 4466

www.clearglaze.com

395 Hertford Road Enfield Highway EN3 5PP

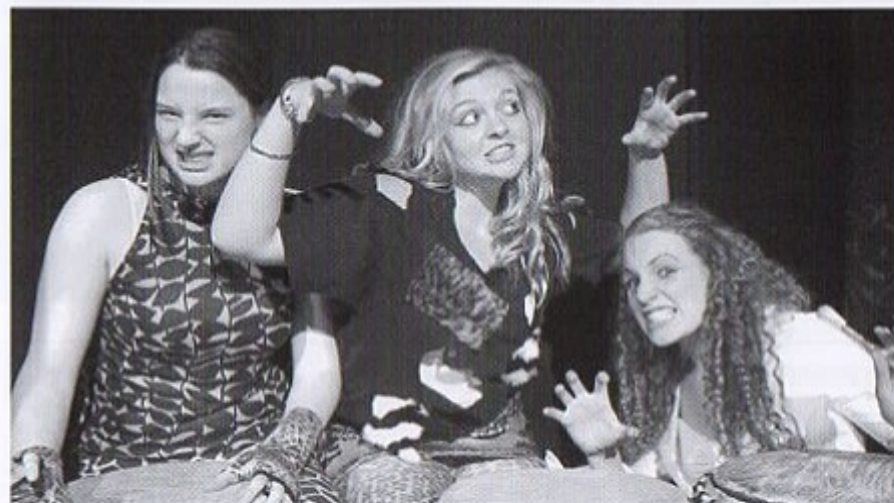
FENSA

registered

15% off with this advert



An outstanding boarding and day school for senior girls



The *Good Schools Guide* A Level Award Winners 2006
for the best results achieved by girls taking
Drama and Theatre Studies at an independent school

We offer a range of scholarships and up to 100% bursaries

For more information

**☎ 01707 602500 or
visit www.queenswood.org**

Shepherd's Way, Brookmans Park, Hatfield, Hertfordshire, AL9 6NS
Queenswood is a registered charity (311060) dedicated to girls' education

FFBOS.com

Tickets:
020 8482 6923
tickets@ffbos.com

Finchley & Friern Barnet
Operatic Society
presents

Sweet Charity

MILLFIELD THEATRE
Silver Street,
Edmonton
London, N18 1PJ

music by Cy Coleman
lyrics by Dorothy Fields
book by Neil Simon

Tues 15th – Sat
19th April 2008
Evenings at 7.45 pm
Sat Matinee at 3:00pm

Based on an original screenplay by Federico Fellini, Tullio Pinelli and Ennio Flaiano
This amateur production is presented by arrangement with MusicScope and Stage Musicals Limited of New York
Produced for the Broadway stage by Fryer, Carr and Harris Concevold, Staged and choreographed by Bob Fosse

cineworld
CINEMAS

*Amazing Grace,
How Sweet
the Sound!*

Jubilee Church are pleased
to support Grace Farrell

Meeting at *cineworld*, Enfield
Sundays at 10am
All Welcome



jubilee church
it's all about Jesus

Village Vet 

The vet your pet would choose

Potters Bar
9 Southgate Road, Potters Bar EN6 5DR
tel: 01707 645089 (24 hours)

Brookmans Park
5 Bradmore Green,
Brookmans Park
AL9 7QW
tel: 01707 649649
(24 hours)



Village Vet is pleased to support Sandy the dog
www.villagevet.co.uk

Green Room Productions present
A MAJOR MUSICAL THEATRE EVENT


SHOW BOAT

Music by Jerome Kern Books and lyrics by Oscar Hammerstein II

Tuesday 6 to Saturday 10 May 2008 at 7.45pm
Saturday Matinee at 3pm
Wyllyotts Theatre, Darkes Lane, Potters Bar

Showboat is a musical treasure that contains the best of everything: a great story, moving lyrics and songs that are played and loved the world over, including Can't Help Lovin' Dat Man and Ol' Man River. From the vibrant banks of the Mississippi in the 1880s to the music halls of Chicago in the Roaring Twenties, this panoramic story of romance is rightly recognised as a landmark of musical theatre.

For tickets and information
call 020 8360 1957



THE NIGHTINGALE
COMMUNITY HOSPICE ENFIELD

The Nightingale Community Hospice Trust

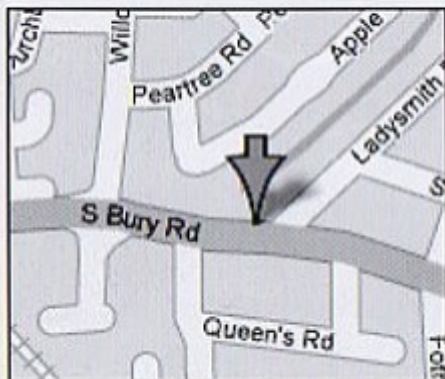
The Nightingale Community Hospice Trust was founded in the summer of 2002 as a charity to provide support, help and information to people with cancer and their families living in the borough of Enfield.

All the services are free to clients/carers and include:-
Drop-ins on Wednesday and Friday afternoons from 1.30–4.30 pm
Complementary therapies • Counselling • Carers support
Home sitting/befriending service • Night Sitting • Bereavement Group
Lymphoedema Clinic • Advice and Information Services
For further information please contact Sally Ainsworth 020 8366 4333

The Nightingale Community Hospice Trust
53 Lancaster Road Enfield Middlesex EN2 0BU registered charity no1094435

THE BOOZE STORE

*The Best Off Licence In Enfield
Sponsoring Miss Hannigan*



Guaranteed to have the best range
in North London!

Can't find it elsewhere? - we'll
have it in stock!

**34 Southbury Road
Enfield**

BEERS, SPIRITS, WINES, CONFECTIONERY

DYNASTART

AUTO ELECTRICAL ENGINEERS & CRASH
REPAIR SPECIALISTS

MOT CENTRE - 6 Days, by Appointment
No Retest Fee

Servicing - Batteries - Tyre Fitting/Balancing

Latest Diagnostics Equipment

Free Pick Up & Delivery

Competitive Prices

12 BARNET ROAD, POTTERS BAR,
HERTS EN6 2QS



TEL: 01707 644465

L. Wren (Jeweller)

est. since 1969

53 Darkes Lane, Potters Bar
Hertfordshire, EN6 1BJ

Tel: Potters Bar 01707 656373

For 'Something Different'
in Gold and Silver Jewellery

Jewellery and Watch Repairs

Watch Batteries

Valuations - Insurance or Probate

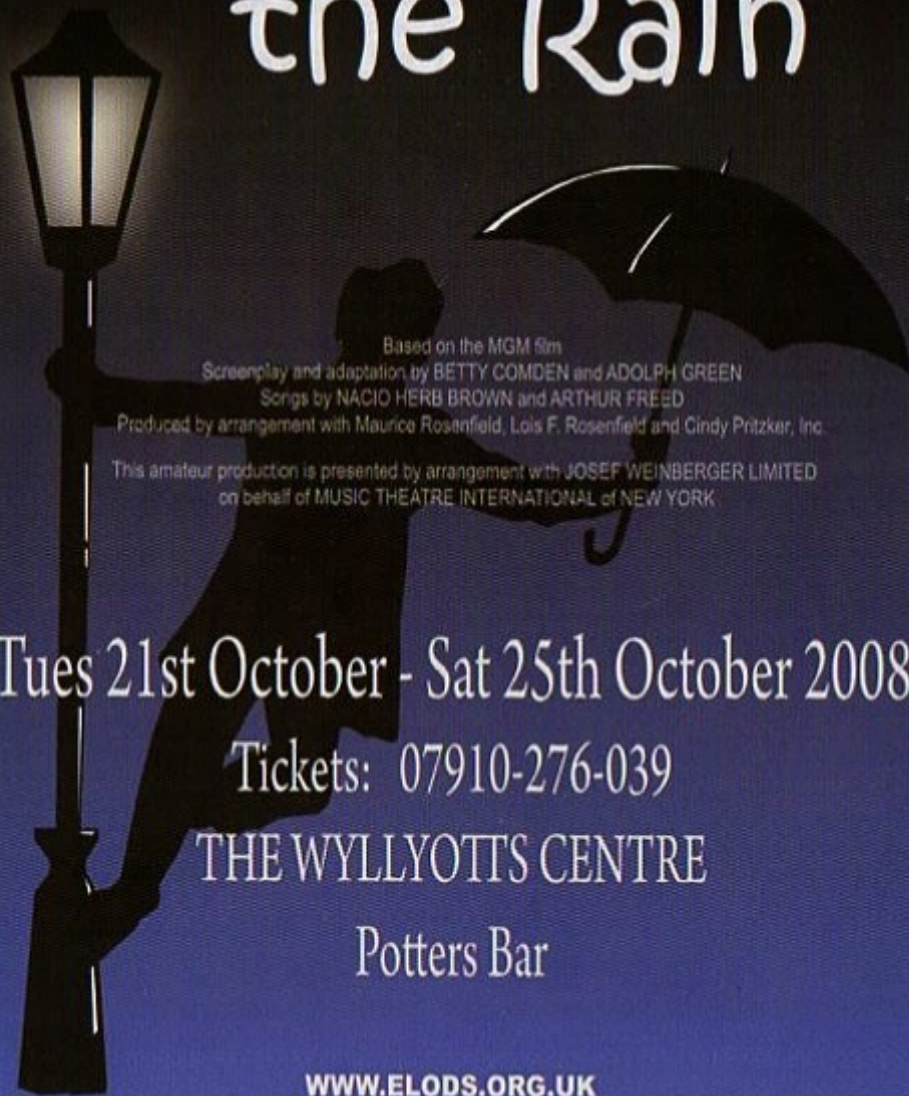
Gift Wrap Service

Thank you for supporting your local shops



ELODS presents

Singing in the Rain



Based on the MGM film

Screenplay and adaptation by BETTY COMDEN and ADOLPH GREEN

Songs by NACIO HERB BROWN and ARTHUR FREED

Produced by arrangement with Maurice Rosenfield, Lois F. Rosenfield and Cindy Pritzker, Inc.

This amateur production is presented by arrangement with JOSEF WEINBERGER LIMITED
on behalf of MUSIC THEATRE INTERNATIONAL of NEW YORK

Tues 21st October - Sat 25th October 2008

Tickets: 07910-276-039

THE WYLLYOTTS CENTRE

Potters Bar

WWW.ELODS.ORG.UK